

PATUXENT RIVER, MARYLAND

TACAN RWY 6

TACAN NHK Chan 39 (Y)	APCH CRS 067°	Rwy ldg TDZE Arpt Elev	11,799 39
--------------------------	------------------	------------------------------	--------------

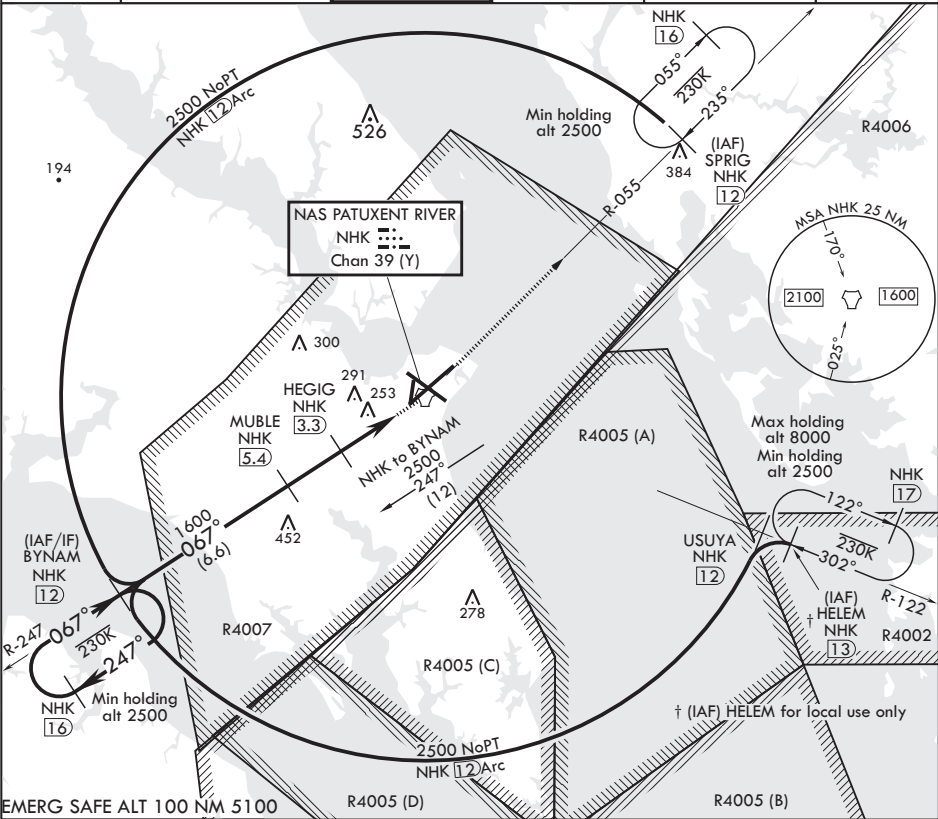
AL-314 (USN) PATUXENT RIVER NAS (TRAPNELL FLD) (KNHK)

▼ \* When ALS inop, increase vis CAT AB to 1 mile, CAT CD vis to 1 3/8 miles.

ALSF-1

MISSED APPROACH: Climb to 2500 direct NHK TACAN and NHK R-055 to SPRIG and hold.

ATIS 322.425	APP CON/DEP CON 121.0 250.3	TOWER 123.7 343.65	GND CON 120.6 336.4	CLNC DEL 135.2 316.125	ASR/PAR
-----------------	--------------------------------	-----------------------	------------------------	---------------------------	---------



EMERG SAFE ALT 100 NM 5100

BYNAM NHK 12

2500

247°

067°

MUBLE NHK 5.4

1600

HEGIG NHK 3.3

940

1.9

TACAN

NIVDE NHK 1.1

2.1 NM

2.2 NM

.5

2.95° ≥ TCH 50

2500

NHK

NHK R-055

SPRIG NHK 12

ELEV 39

TDZE 39

185

067° 4.8 NM from FAF

11,799 + 200

9732 + 200

0.8021 X 75

BCN

HH

2

1

2

3

4

5

6

7

8

9

10

11

12

13

14

15

16

17

18

19

20

21

22

23

24

25

26

27

28

29

30

31

32

33

34

35

36

37

38

39

40

41

42

43

44

45

46

47

48

49

50

51

52

53

54

55

56

57

58

59

60

61

62

63

64

65

66

67

68

69

70

71

72

73

74

75

76

77

78

79

80

81

82

83

84

85

86

87

88

89

90

91

92

93

94

95

96

97

98

99

100

CATEGORY	A	B	C	D
S-6*	520-1/2 481 (500-1/2)	520-1 481 (500-1)	520-1 481 (500-1)	520-1 481 (500-1)
✪ CIRCLING	560-1 521 (600-1)	600-1 561 (600-1)	620-1 581 (600-1/2)	660-2 621 (700-2)

TDZL/CL Rwy 6  
HIRL Rwy 6-24, 14-32

PATUXENT RIVER, MARYLAND

38°17'N - 76°25'W PATUXENT RIVER NAS (TRAPNELL FLD) (KNHK)

Amdt 1 25MAY17

TACAN RWY 6

NE-3, 31 DEC 2020 to 28 JAN 2021

NE-3, 31 DEC 2020 to 28 JAN 2021