

LOC I-RGJ	APP CRS	Rwy Idg	9003
110.7	157°	TDZE	167
		Apt Elev	168

ILS or LOC RWY 16

RICHMOND INTL (RIC)

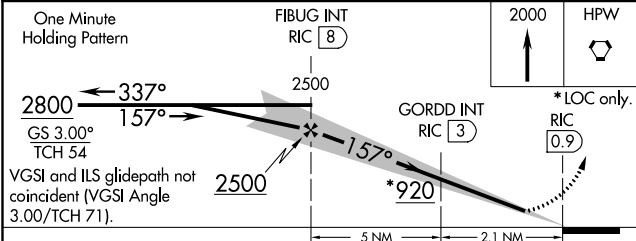
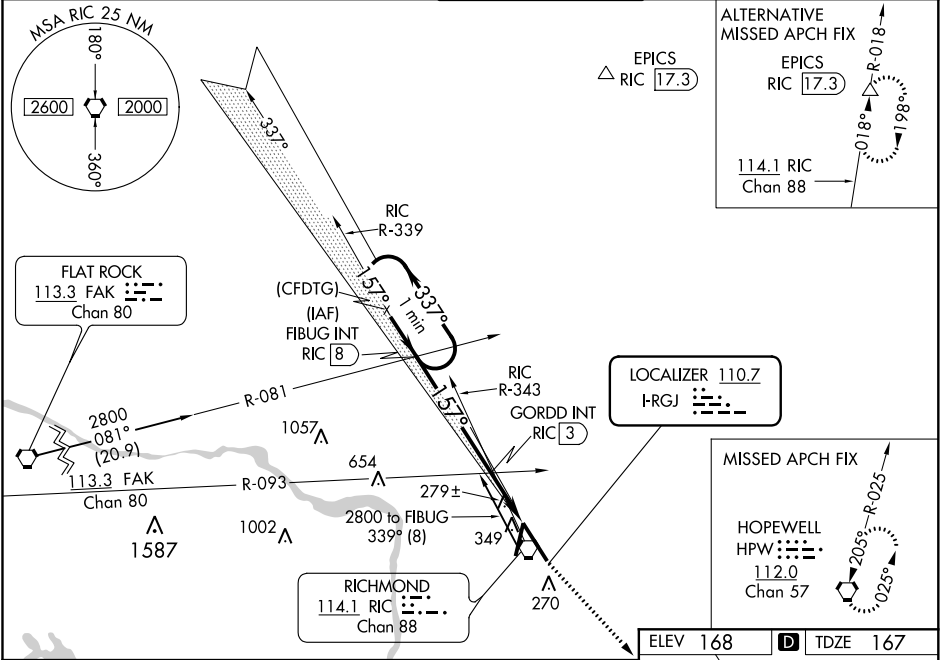
⚠ For inop ALS, increase S-LOC 16 Cats C and D visibility to 2 SM. GORDD Fix Minimums: for inop ALS, increase S-LOC 16 Cats C and D visibility to 1½ SM. **RVR 1800 authorized with use of FD or AP or HUD to DA. % DME from RIC VORTAC.

MALSR

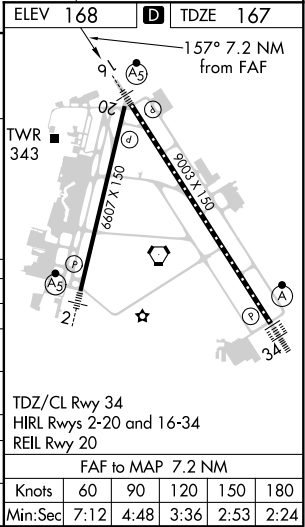
AS

MISSED APPROACH:
Climb to 2000 direct
HPW VORTAC and hold.

ATIS	POTOMAC APP CON	RICHMOND TOWER	GND CON	CLNC DEL
119.15 263.025	126.4 282.375 (001°-185°) 126.75 307.2 (186°-360°)	121.1 257.8	121.9 348.6	127.55 348.6



CATEGORY	A	B	C	D
S-ILS 16 **		367/24	200 (200-½)	
S-LOC 16	920/24 753 (800-½)	920/40 753 (800-¾)	920-1¾	753 (800-1¾)
CIRCLING	920-1 752 (800-1)	920-1¼ 752 (800-1¼)	920-2½	752 (800-2½)
GORDD FIX MINIMUMS %				
S-LOC 16	580/24	413 (500-½)	580/40	413 (500-¾)
CIRCLING	660-1	492 (500-1)	700-1½ 532 (600-1½)	720-2 552 (600-2)



NE-3, 31 DEC 2020 to 28 JAN 2021

NE-3, 31 DEC 2020 to 28 JAN 2021