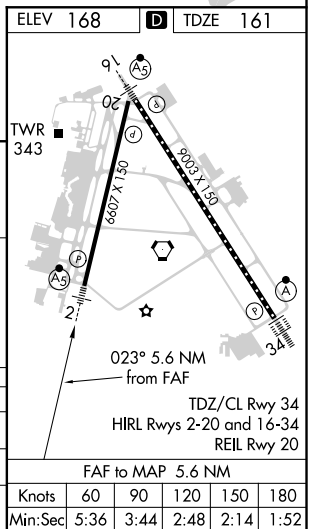


ILS or LOC RWY 2
RICHMOND INTL (RIC)

ATIS		POTOMAC APP CON		RICHMOND TOWER		GND CON		CLNC DEL	
119.15	263.025	126.4	282.375 (001°-185°)	121.1	257.8	121.9	348.6	127.55	348.6
		126.75	307.2 (186°-360°)						



CATEGORY	A	B	C	D
S-ILS 2		457- $\frac{3}{4}$	296 (300- $\frac{3}{4}$)	
S-LOC 2		560- $\frac{3}{4}$	399 (400- $\frac{3}{4}$)	
C CIRCLING	660-1	492 (500-1)	700-1 $\frac{1}{2}$ 532 (600-1 $\frac{1}{2}$)	720-2 552 (600-2)

NE-3. 31 DEC 2020 to 28 JAN 2021