

| | | |
|-------------|----------|-------------|
| APP CRS | Rwy Idg | 6607 |
| 203° | TDZE | 168 |
| | Apt Elev | 168 |

RNAV (RNP) Y RWY 20
RICHMOND INTL (RIC)

RNP AR APCH.

T For uncompensated Baro-VNAV systems, procedure NA below -11°C or above 54°C.

MISSED APPROACH: Climb to 2000 on track 203° CASEE and hold.

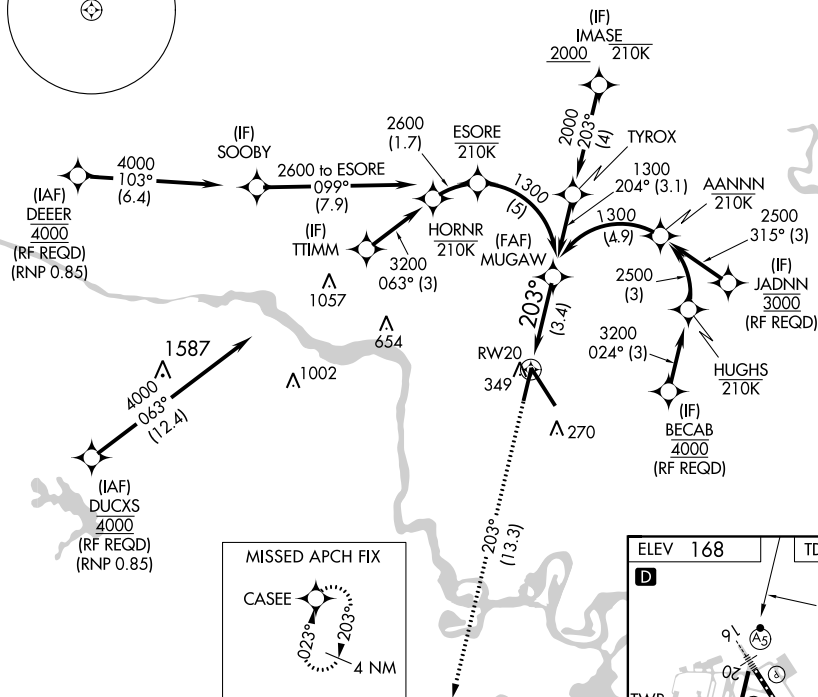
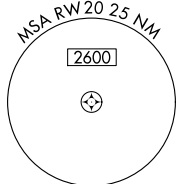
ATIS
119.15 263.025

| | | |
|-----------------|----------------|-------------|
| POTOMAC APP CON | | |
| 126.4 | 282.375 | (001°-185°) |
| 126.75 | 307.2 | (186°-360°) |

RICHMOND TOWER
121.1 257.8

GND CON
121.9 348.6

CLNC DEL
127.55 348.6



2000

CASEE

See planview for multiple IF locations.

| tr | 203° |

RW/02

MUGAW

1300

1300

$$\frac{GP\ 3.00^\circ}{TCL\ 10}$$

ICH 49

CATEGORY

A

B

C

RNP 0.11 DA

50

100-

AUTHORIZATION REQUIRED

RICHMOND, VIRGINIA

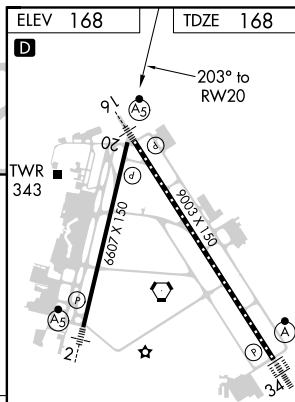
Orig-C 30JAN20

37°30'N-77°19'W

RICHMOND INTL (RIC)

RNAV (RNP) Y RWY 20

NE-3, 31 DEC 2020 to 28 JAN 2021



TDZ/CL Rwy 34
HIRL Rwy 2-20 and 16-34
REIL Rwy 20