

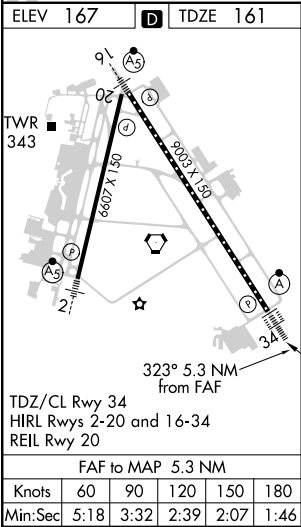
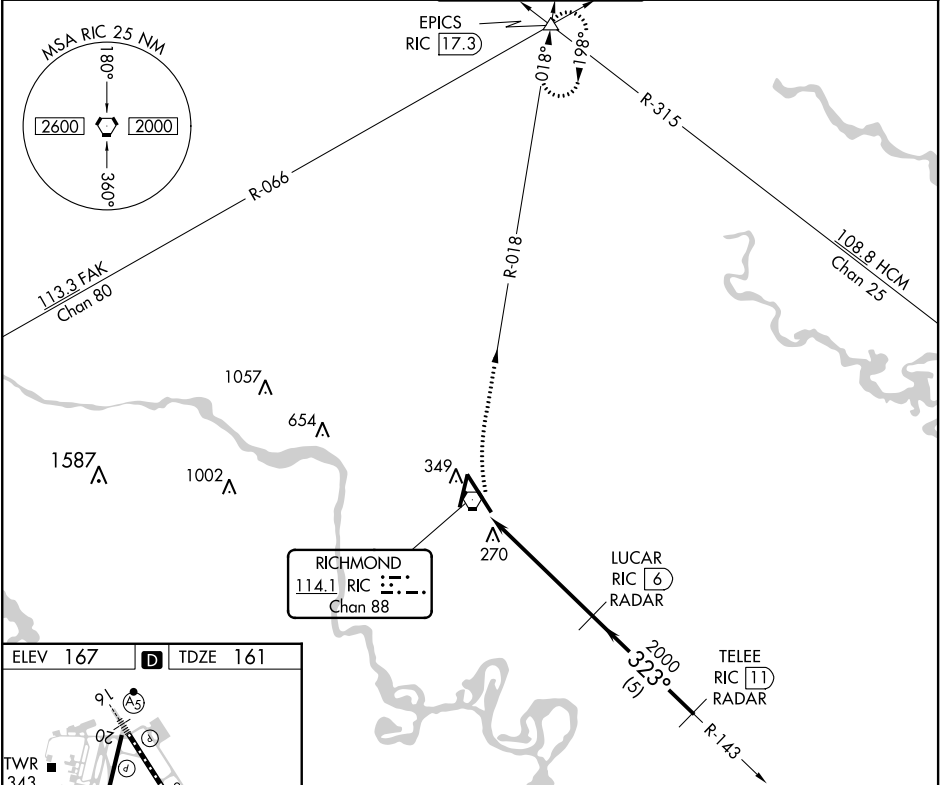
VORTAC RIC	APP CRS	Rwy Idg	9003
114.1	323°	TDZE	161
Chan 88		Apt Elev	167

VOR RWY 34

RICHMOND INTL (RIC)

DME or RADAR required. RADAR required for procedure entry.	ALSF-2	MISSED APPROACH: Climbing right turn to 2000 via RIC R-018 to EPICS INT and hold.
For inop ALS, increase S-34 Cat C/D visibility to RVR 5500.		

ATIS	POTOMAC APP CON	RICHMOND TOWER	GND CON	CLNC DEL
119.15 263.025	126.4 282.375 (001°-185°) 126.75 307.2 (186°-360°)	121.1 257.8	121.9 348.6	127.55 348.6



2000	EPICS	VGSI and descent angles not coincident (VGSI Angle 3/00/TCH 79).		
	RIC R-018	RIC VORTAC	LUCAR RIC 6 RADAR	TELEEE RIC 11 RADAR
		RIC 1.7		
		RIC 0.8		
		323°	323°	2000
		1 NM	4.3 NM	5 NM
			3.19° TCH 55	
CATEGORY	A	B	C	D
S-34	540/24	379 (400-½)	540/40 379 (400-¾)	540/50 379 (400-1)
CIRCLING	660-1	493 (500-1)	700-1½ 533 (600-1½)	720-2 553 (600-2)