

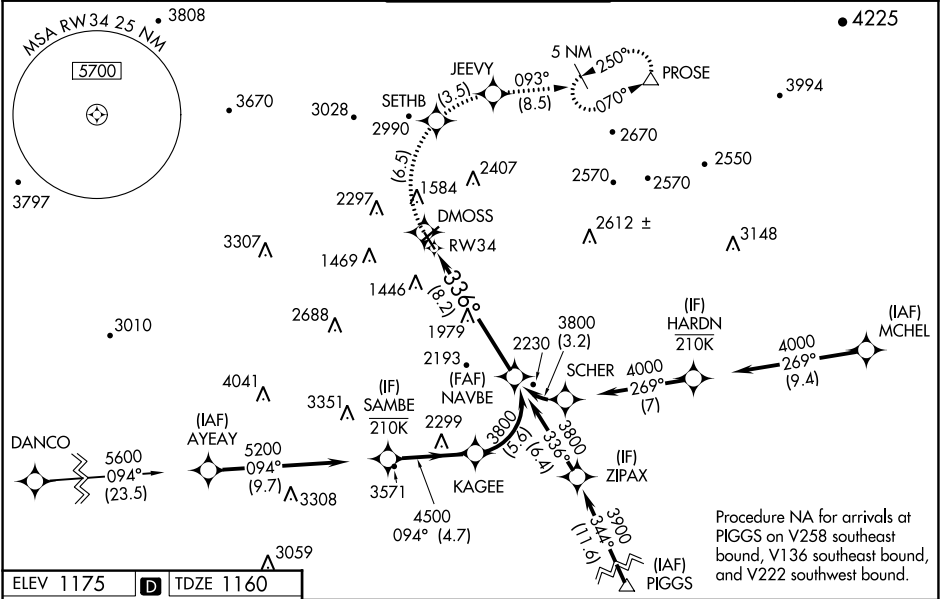
APP CRS	Rwy Idg	5810
336°	TDZE	1160
	Apt Elev	1175

RNAV (RNP) Z RWY 34

ROANOKE-BLACKSBURG RGNL/WOODRUM FIELD (ROA)

RNP AR APCH. RF required.	MALSR	MISSED APPROACH: Climb to 6000 on track 336° to DMOSS, right turn to SETHB, right turn to JEEVY and on track 093° to PROSE and hold. * Missed approach requires minimum climb of 350 feet per NM to 4100. # Missed approach requires minimum climb of 415 feet per NM to 4100.
<div><div>Missed approach requires RNP less than 1.0. For inop ALS, increase RNP 0.30 * all Cats visibility to 1½ SM.</div><div>Inop table does not apply to RNP 0.30.</div><div>For uncompensated Baro-VNAV systems, procedure NA below -14°C or above 54°C.</div></div>	<div><div></div><div></div></div>	

ATIS	ROANOKE APP CON	ROANOKE TOWER	GND CON	CLNC DEL
132.375	126.9 339.8	118.3 257.8	121.9 257.8	119.7



REIL Rwy's 6 and 24  
HIRL Rwy's 6-24 and 16-34

6000 ↑ tr 336°	DMOSS ☼	SETHB ↶	JEEVY ☼	PROSE tr 093° △
See planview for multiple IF locations.				
CATEGORY	A	B	C	D
RNP 0.15 DA #	1495-½ 335 (400-½)			
RNP 0.30 DA*	1646-1 486 (500-1)			
RNP 0.30 DA	2115-4 955 (1000-4)			
AUTHORIZATION REQUIRED				