

APP CRS
058°

Rwy Idg
TDZE
Apt Elev

6800
1175
1175

RNAV (RNP) Z RWY 6

ROANOKE-BLACKSBURG RGNL/WOODRUM FIELD (R.O.A)

RNP AR APCH. RF required.

T

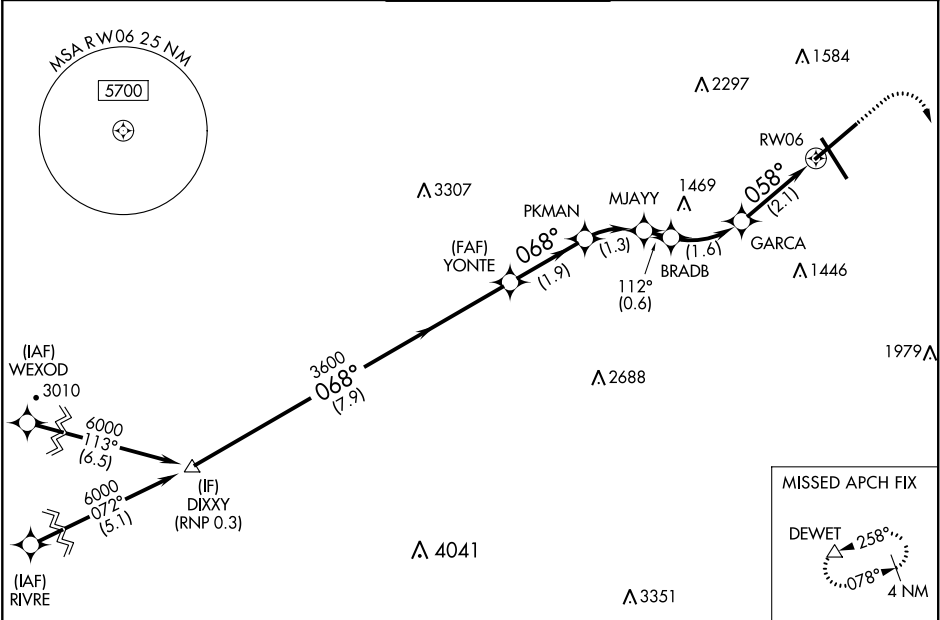
-13°C

For uncompensated Baro-VNAV systems,
procedure NA below -14°C or above 54°C.

MALSR

MISSED APPROACH: (Do not exceed 240K until DEWET) Climb to 1600 then climbing right turn to 5000 direct DEWET and hold, continue climb-in-hold to 5000. *Missed approach requires minimum climb of 370 feet per NM to 2900.

ATIS 132.375	ROANOKE APP CON 126.9 339.8	ROANOKE TOWER 118.3 257.8	GND CON 121.9 257.8	CLNC DEL 119.7
------------------------	---------------------------------------	-------------------------------------	-------------------------------	--------------------------



ELEV 1175

D

TDZE 1175

DIXXY

6000

068°

3600

GP 3.00°

TCH 58

YONTE

3600

PKMAN

3007

MJAYY

2587

BRADB

2396

GARCA

1879

RW06

058°

7.9 NM

1.9 NM

1.3 NM

0.6 NM

1.6 NM

2.1 NM

CATEGORY	A	B	C	D
RNP 0.20 DA*		1425- $\frac{1}{2}$	250 (300- $\frac{1}{2}$)	
RNP 0.30 DA		1605- $\frac{3}{4}$	430 (500- $\frac{3}{4}$)	

AUTHORIZATION REQUIRED

REIL Rwy's 6 and 24
HIRL Rwy's 6-24 and 16-34