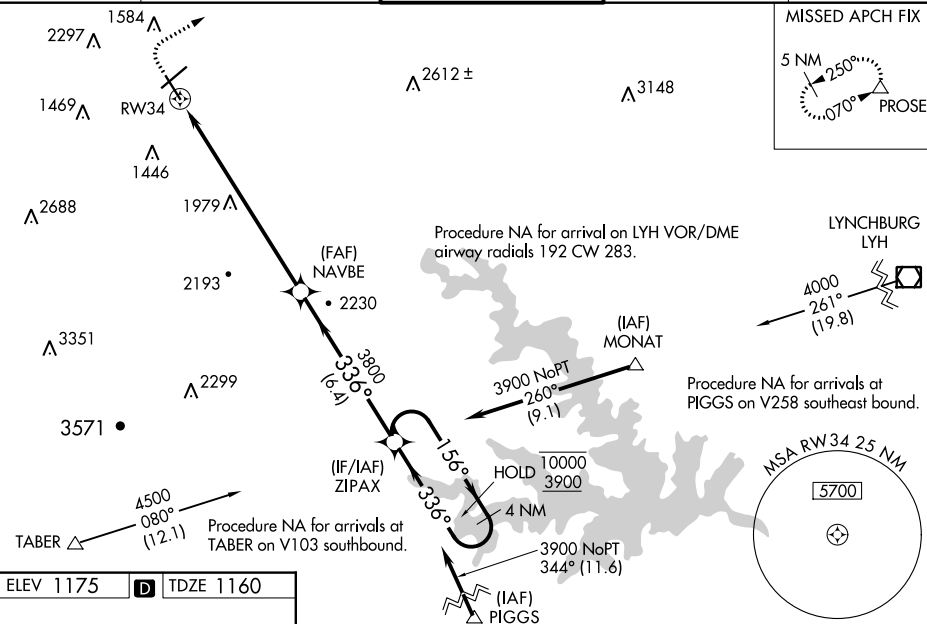


RNAV (GPS) Y RWY 34
ROANOKE-BLACKSBURG RGNL/WOODRUM FIELD (ROA)

T Circling NA northwest of Rwy 6-24. Rwy 34 helicopter visibility reduction below $\frac{3}{4}$ SM NA. For uncompensated Baro-VNAV systems, LNAV/VNAV NA below -14°C or above 54°C. Inop table does not apply to LPV, LNAV/VNAV or LNAV Cat C/D. For inop ALS, increase LPV# all Cats visibility to $\frac{1}{8}$ SM.

MISSED APPROACH: (Do not exceed 240K until PROSE) Climb to 2800 then climbing right turn to 6000 direct PROSE and hold, continue climb-in-hold to 6000. # Missed approach requires minimum climb of 405 feet per NM to 3900.

CLNC DEL
119.7



REIL Rwys 6 and 24
HIRL Rwy 6-24 and 16-34

