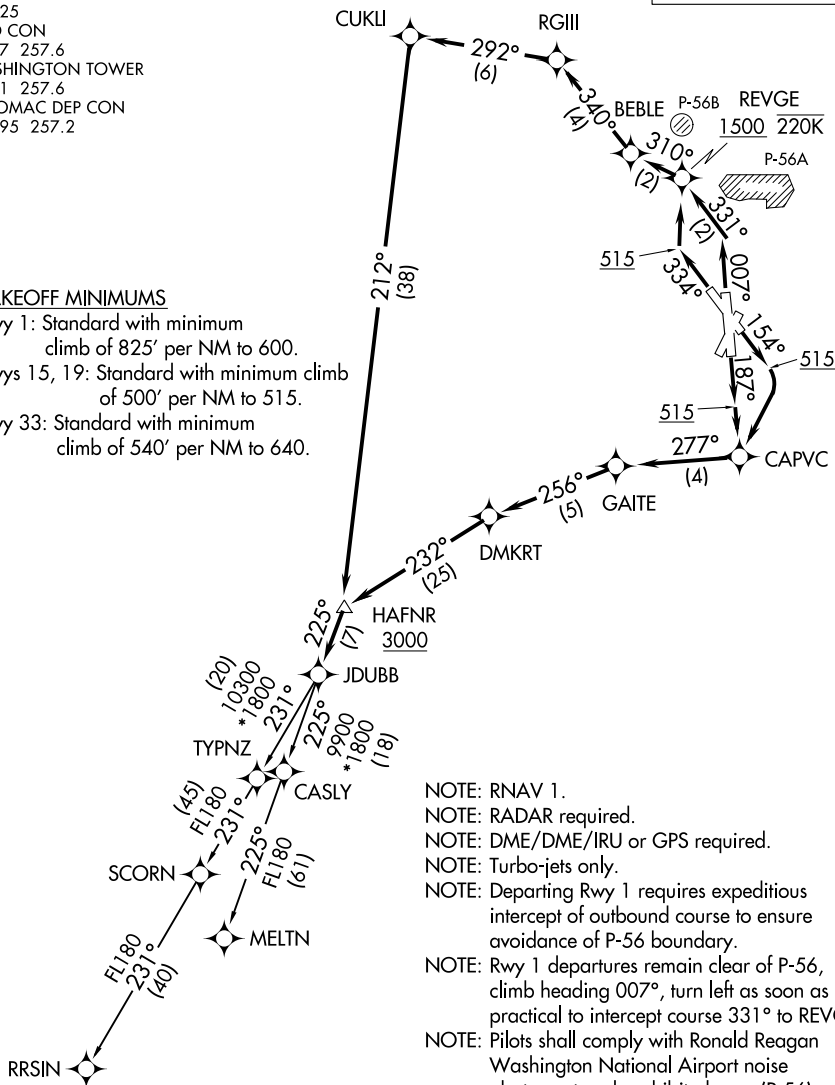


D-ATIS  
132.65  
CLNC DEL  
128.25  
GND CON  
121.7 257.6  
WASHINGTON TOWER  
119.1 257.6  
POTOMAC DEP CON  
118.95 257.2

**TOP ALTITUDE:  
5000**

**TAKEOFF MINIMUMS**

Rwy 1: Standard with minimum  
climb of 825' per NM to 600.  
Rwys 15, 19: Standard with minimum climb  
of 500' per NM to 515.  
Rwy 33: Standard with minimum  
climb of 540' per NM to 640.



- NOTE: RNAV 1.  
NOTE: RADAR required.  
NOTE: DME/DME/IRU or GPS required.  
NOTE: Turbo-jets only.  
NOTE: Departing Rwy 1 requires expeditious intercept of outbound course to ensure avoidance of P-56 boundary.  
NOTE: Rwy 1 departures remain clear of P-56, climb heading 007°, turn left as soon as practical to intercept course 331° to REVGE.  
NOTE: Pilots shall comply with Ronald Reagan Washington National Airport noise abatement and prohibited area (P-56) avoidance procedures as defined in the Chart Supplement special notices.  
NOTE: If unable to accept climb rate advise ATC on initial contact.

(NARRATIVE ON FOLLOWING PAGE)

NOTE: Chart not to scale.