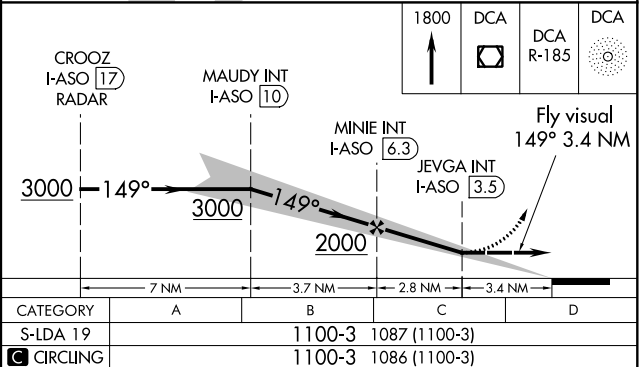
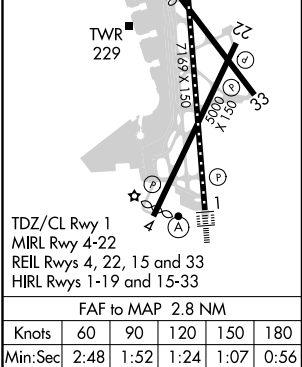
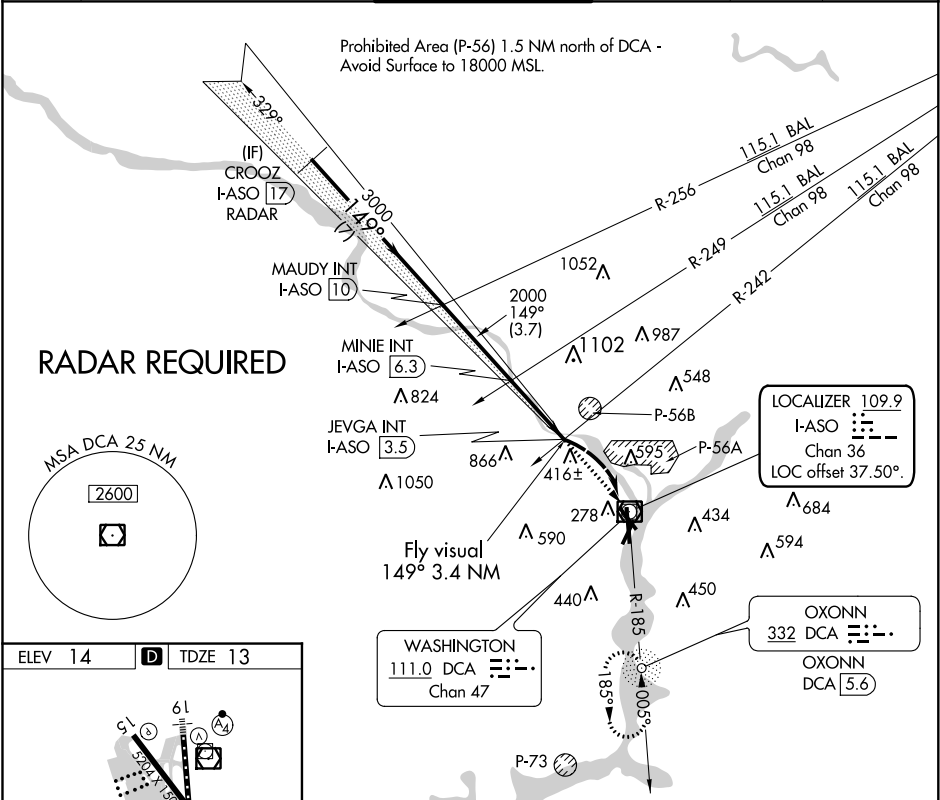


LOC/DME I-ASO	APP CRS	Rwy Idg	6869
109.9	149°	TDZE	13
Chan 36		Apt Elev	14

LDA Y RWY 19
RONALD REAGAN WASHINGTON NATIONAL (DCA)

<div><div></div><div></div></div> <div>Inoperative table does not apply. Circling NA northeast of Rwy 15-33. ADF or DME required.</div>	<div><div></div><div></div></div> <div>MALSF MISSED APPROACH: Climb to 1800 direct DCA VOR/DME and on DCA VOR/DME R-185 to OXONN NDB/DCA 5.6 DME and hold.</div>
---	--

D-ATIS 132.65	POTOMAC APP CON 119.85 239.25 (WEST/SOUTH) 124.2 360.8 (EAST)	WASHINGTON TOWER 119.1 257.6	GND CON 121.7 257.6	CLNC DEL 128.25	CPDLC
------------------	---	---------------------------------	------------------------	--------------------	-------



NE-3, 31 DEC 2020 to 28 JAN 2021

NE-3, 31 DEC 2020 to 28 JAN 2021