



LOC/DME I-VVWH	APP CRS	Rwy Idg
108.5	147°	6869
Chan 22		TDZE 13
		Apt Elev 14

LDA Z RWY 19

RONALD REAGAN WASHINGTON NATIONAL (DCA)

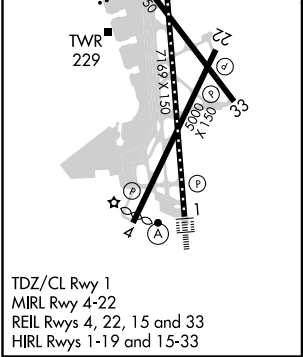
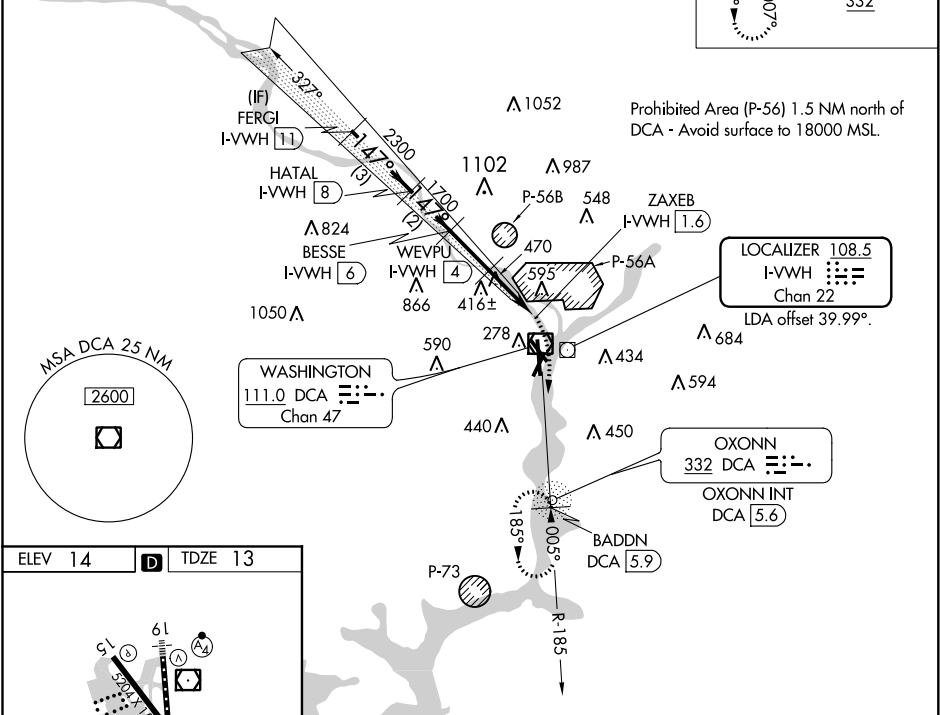
 Inop table does not apply. Circling NA northeast of Rwy 15-33. Rwy 19 helicopter visibility reduction below 1 SM NA. DME required.	 MALSF	MISSED APPROACH: Climbing right turn to 3000 on DCA VOR/DME R-185 to BADDN/DCA VOR/DME 5.9 DME and hold, continue climb-in-hold to 3000.
--	---	--


D-ATIS 132.65	POTOMAC APP CON 119.85 239.25 124.2 360.8 (WEST/SOUTH) (EAST)	WASHINGTON TOWER 119.1 257.6	GND CON 121.7 257.6	CLNC DEL 128.25	CPDLC
-------------------------	--	--	-------------------------------	---------------------------	-------

ALTERNATE MISSED APCH FIX



RADAR REQUIRED



	3000	3000	3000	3000
	147°	2300	1700	1100
	3.04°	TCH 50		
	3 NM	2 NM	2 NM	2.4 NM
	0.8			
CATEGORY	A	B	C	D
S-19	720/55	707 (800-1)	720-2	707 (800-2)
 CIRCLING	720-1	706 (800-1)	840-1½ 826 (900-1½)	900-3 886 (900-3)

NE-3, 31 DEC 2020 to 28 JAN 2021

NE-3, 31 DEC 2020 to 28 JAN 2021