

NUMMY THREE ARRIVAL

WASHINGTON, DC

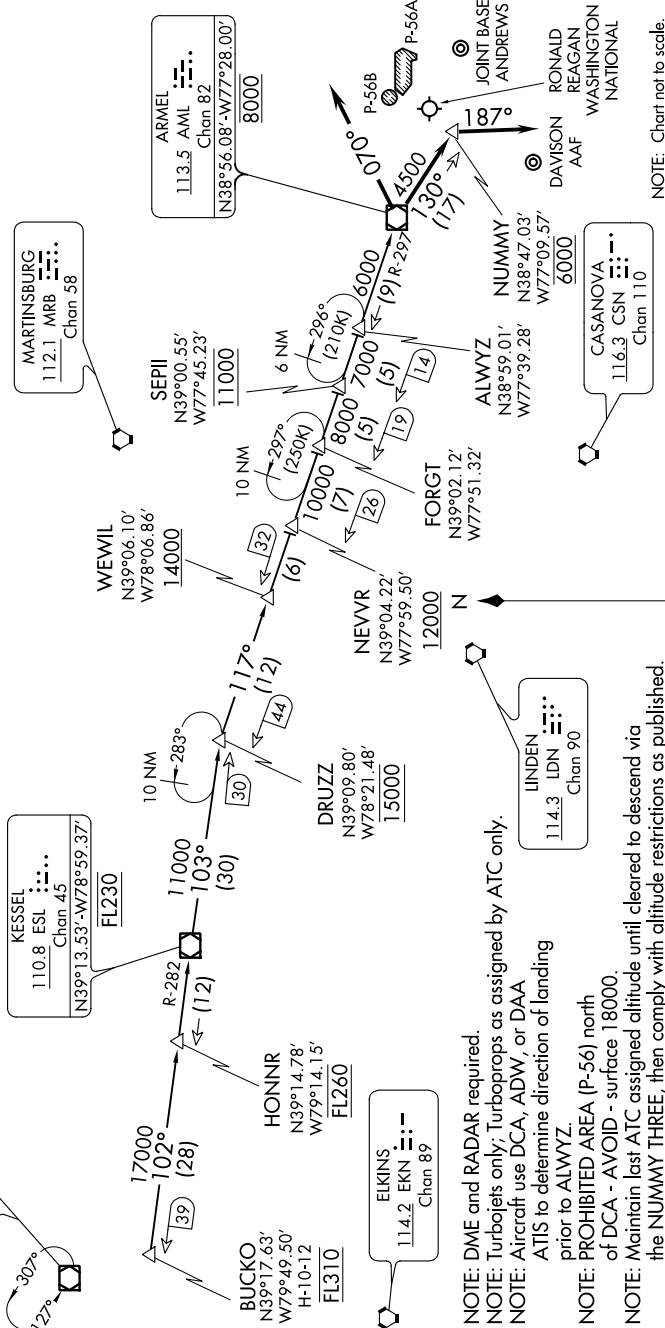
NE-3, 31 DEC 2020 to 28 JAN 2021

ARRIVAL ROUTE DESCRIPTION

BUCKO TRANSITION (BUCKO NUMMY3): From over BUCKO on ESL R-282 to ESL VOR/DME, then on ESL R-103 to DRUZZ, then on AML R-297 to AML VOR/DME.

Landing DCA Rwy's 1, 4, 33, ADW Rwy's 1L, 1R, and DAA: From over AML VOR/DME on AML VOR/DME

Landing DCA Rwy's 15, 19, 22 and ADW Rwy's 19L, 19R: Depart AML VOR/DME on heading 070°, expect radar vectors to final approach course.



NOTE: Chart not to scale.

NE-3, 31 DEC 2020 to 28 JAN 2021

NOTE: DME and RADAR required.

NOTE: Turbojets only; Turboprops as assigned by ATC only.

NOTE: Aircraft use DCA, ADW, or DAA

ATIS to determine direction of landing

prior to ALWYZ.

NOTE: PROHIBITED AREA (P-56) north

NOTE: Maintain last ATC assigned altitude until cleared to descend via the NUMMY THREE, then comply with altitude restrictions as published.

NUMMY THREE ARRIVAL

(AML.NUMMY3) 20JUN19

WASHINGTON, DC