

LOC HLG	APP CRS	Rwy Idg	7012
110.3	015°	TDZE	76
		Apt Elev	80

ILS or LOC RWY 1

NEW CASTLE (ILG)

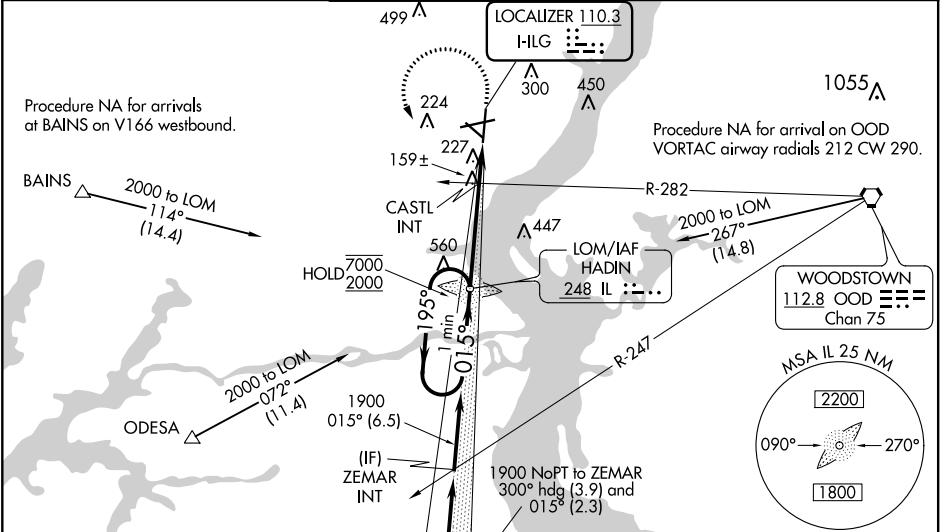
ADF required.
RADAR required to define BLARE.

When local altimeter setting not received, use Philadelphia altimeter setting increase all DA to 330 feet and all MDA 60 feet; increase S-LOC 1 Cats C/D visibility to 1½ SM and Circling visibility Cat C to 1½ SM, Cat D to 2½ SM; increase CASTL fix minimums S-LOC 1 Cat C/D to 1½ SM for CASTL fix minimums and Circling Cat D to 2½ SM. For inop ALS increase S-LOC 1 Cat C/D to 1½ SM for CASTL fix minimums, increase S-LOC 1 Cats C/D visibility to 1½ SM. For inop ALS when using Philadelphia Intl altimeter setting, increase S-LOC 1 Cat C and D visibility to 1½ SM; CASTL fix minimums S-LOC 1 Cats C/D to 1½ SM. **RVR 1800 authorized with use of FD or AP or HUD to DA (NA when using Philadelphia Intl altimeter setting).

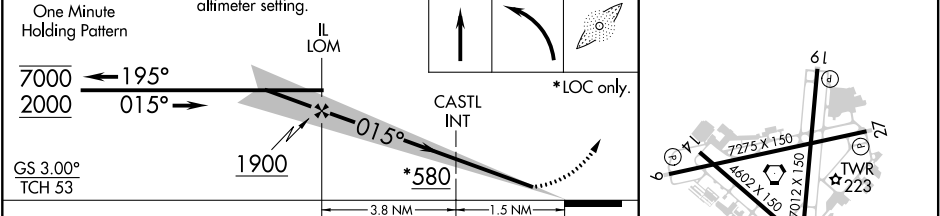
MALSR

MISSED APPROACH:
Climb to 900 then climbing left turn to 2000 direct HADIN LOM and hold.

ATIS	PHILADELPHIA APP CON	WILMINGTON TOWER*	GND CON	CLNC DEL	UNICOM
123.95	118.35 323.1	126.0 (CTAF) 352.05	121.7 275.8	119.95	122.95



ELEV	80	TDZE	76
REIL Rwy 9, 19 and 27			
HIRL Rwy 9-27 and 1-19			
MIRL Rwy 14-32			



CATEGORY	A	B	C	D
S-ILS 1**	276/24 200 (200-½)			
S-LOC 1	580/24	504 (500-½)	580/55	504 (500-1)
CIRCLING	580-1	500 (500-1)	600-1½ 520 (600-1½)	800-2¼ 720 (800-2¼)
CASTL FIX MINIMUMS (DUAL VOR RECEIVERS REQUIRED)				
S-LOC 1	480/24	404 (400-½)	480/40	404 (400-¾)
CIRCLING	540-1	560-1	600-1½ 520 (600-1½)	800-2¼ 720 (800-2¼)
FAF to MAP 5.3 NM				
Knots 60 90 120 150 180				
Min:Sec 5:18 3:32 2:39 2:07 1:46				