

WAAS CH 65815 W01A	APP CRS 015°	Rwy Idg 7012 TDZE 76 Apt Elev 80
--	------------------------	---

RNAV (GPS) RWY 1


NEW CASTLE (ILG)

▼

▲

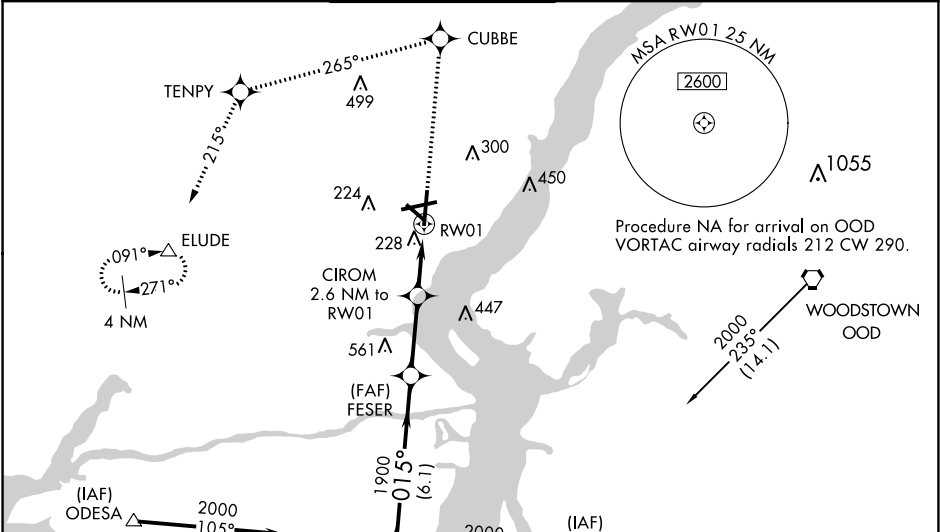
Inoperative table does not apply to LPV all Cats and LNAV Cats A and B. Baro-VNAV NA when using Philadelphia Intl altimeter setting. For uncompensated Baro-VNAV systems, LNAV/VNAV NA below -1.5°C (5°F) or above 49°C (120°F). DME/DME RNP-0.3 NA. Visibility reduction by helicopters NA. When local altimeter setting not received, use Philadelphia Intl altimeter setting: increase LPV DA to 380, LNAV/VNAV DA to 579, and all MDA 60 feet; increase LNAV/VNAV all Cats visibility to RVR 6000. For inoperative MALSR, increase LNAV Cats C and D visibility ¼ mile. For inoperative MALSR, when using Philadelphia Intl altimeter setting, increase LNAV visibility Cat C ¼ mile.

MALSR



MISSED APPROACH: Climb to 2000 direct CUBBE and left turn via track 265° to TENPY and via track 214° to ELUDE and hold.

ATIS 123.95	PHILADELPHIA APP CON 118.35 323.1	WILMINGTON TOWER★ 126.0 (CTAF) 352.05	GND CON 121.7 275.8	CLNC DEL 119.95	UNICOM 122.95
-----------------------	---	--	-------------------------------	---------------------------	-------------------------



ELEV 80 TDZE 76

REIL Rwys 9, 27 and 19

HIRL Rwys 9-27 and 1-19

MIRL Rwy 14-32

CATEGORY	A	B	C	D
LPV DA	326/50 250 (300-1)			
LNAV/VNAV DA	525/50 449 (500-1)			
LNAV MDA	480/50 404 (400-1)			
CIRCLING	540-1 460 (500-1)		600-1½ 520 (600-1½)	640-2 560 (600-2)