

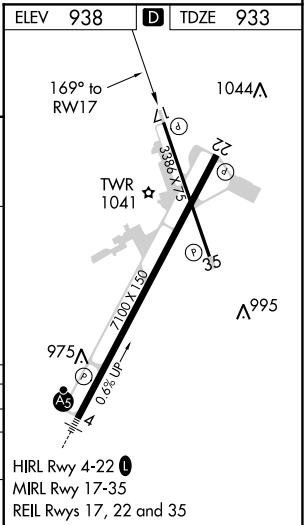
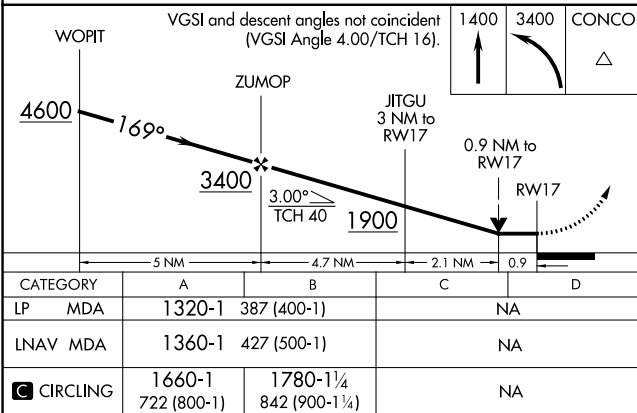
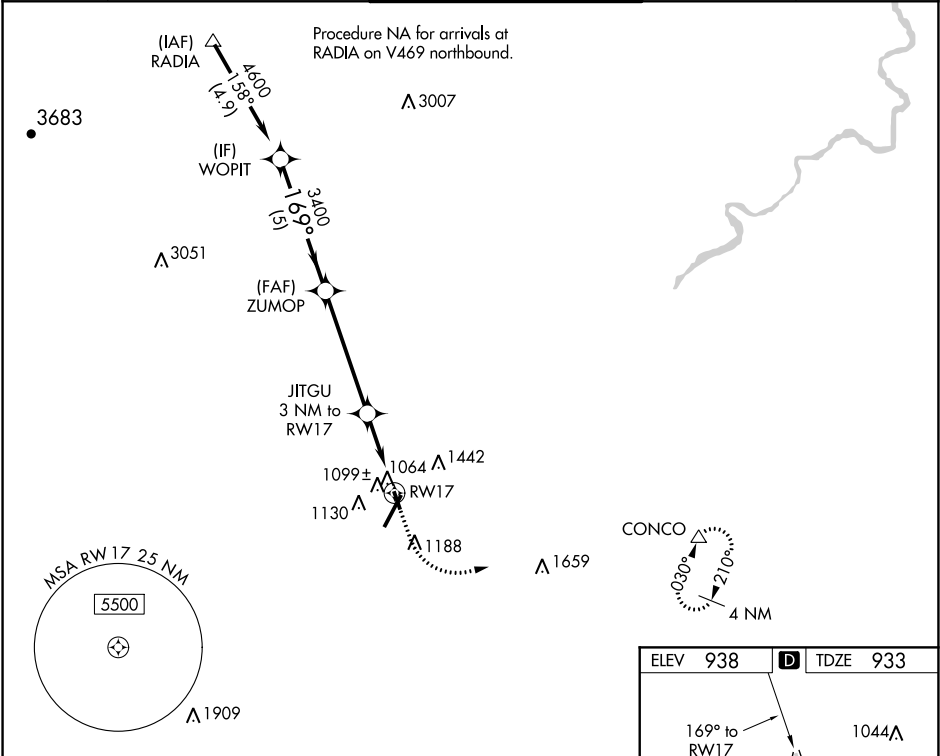
WAAS CH 48934 W17A	APP CRS 169°	Rwy Idg TDZE 933 Apt Elev 938
--	------------------------	---

RNAV (GPS) RWY 17

LYNCHBURG RGNL/PRESTON GLENN FIELD (LYH)

RNP APCH.	MISSED APPROACH: Climb to 1400 then climbing left turn to 3400 direct CONCO and hold.
Procedure NA at night. Rwy 17 helicopter visibility reduction below 1 SM NA.	

ATIS 119.8	ROANOKE APP CON 135.0 254.325	LYNCHBURG TOWER ★ 127.65 (CTAF) 0 257.8	GND CON 121.9	UNICOM 122.95
----------------------	---	---	-------------------------	-------------------------



NE-3, 31 DEC 2020 to 28 JAN 2021

NE-3, 31 DEC 2020 to 28 JAN 2021