

19003

RNAV (GPS) RWY 35

RNP APCH.

T Circling Rwy 17 NA at night.
A Rwy 35 helicopter visibility reduction below $\frac{3}{4}$ SM NA.

MISSED APPROACH: Climb to 4900 direct RADIA and hold.

ATIS
119.8

ROANOKE APP CON
135.0 254.325

LYNCHBURG TOWER ★
127.65 (CTAF) **L** 257.8

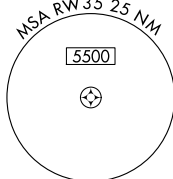
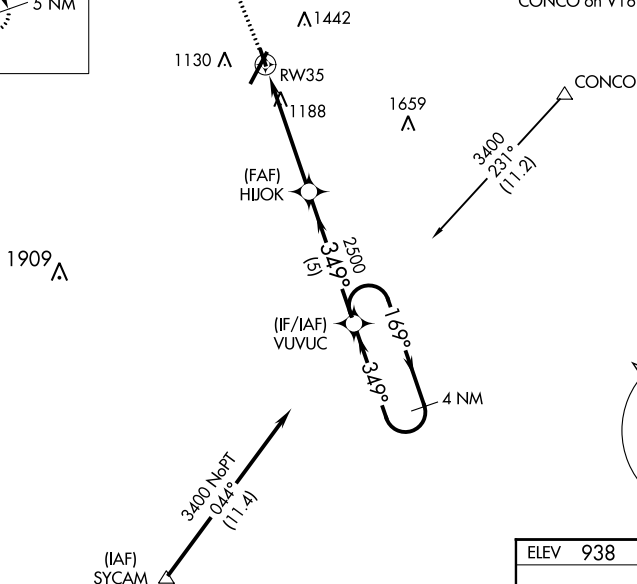
GND CON
121.9

UNICOM
122.95



MISSED APCH FIX



Procedure NA for arrivals at
CONCO on V16-260 eastbound.

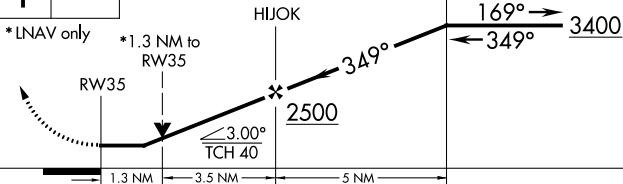



Procedure NA for arrivals at SYCAM on V469 southbound.

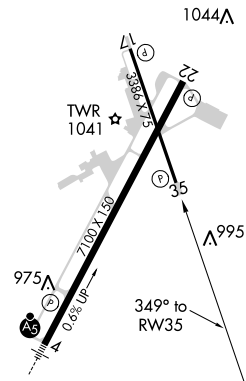
4900	RADIA
	

VGSI and descent angles not coincident
(VGSI Angle 4.00/TCH 17).

VUVUC 4 NM
Holding Pattern



CATEGORY	A	B	C	D
LP MDA	1480-1	547 (600-1)	NA	
LNAV MDA	1500-1	567 (600-1)	NA	
 CIRCLING	1660-1 722 (800-1)	1780-1¼ 842 (900-1¼)	NA	



HIRL Rwy 4-22 **L**
MIRL Rwy 17-35
REIL Rwy 17, 22 and 35

LYNCHBURG RGNL/PRESTON GLENN FIELD (LYH)

RNAV (GPS) RWY 35

NE-3, 31 DEC 2020 to 28 JAN 2021