

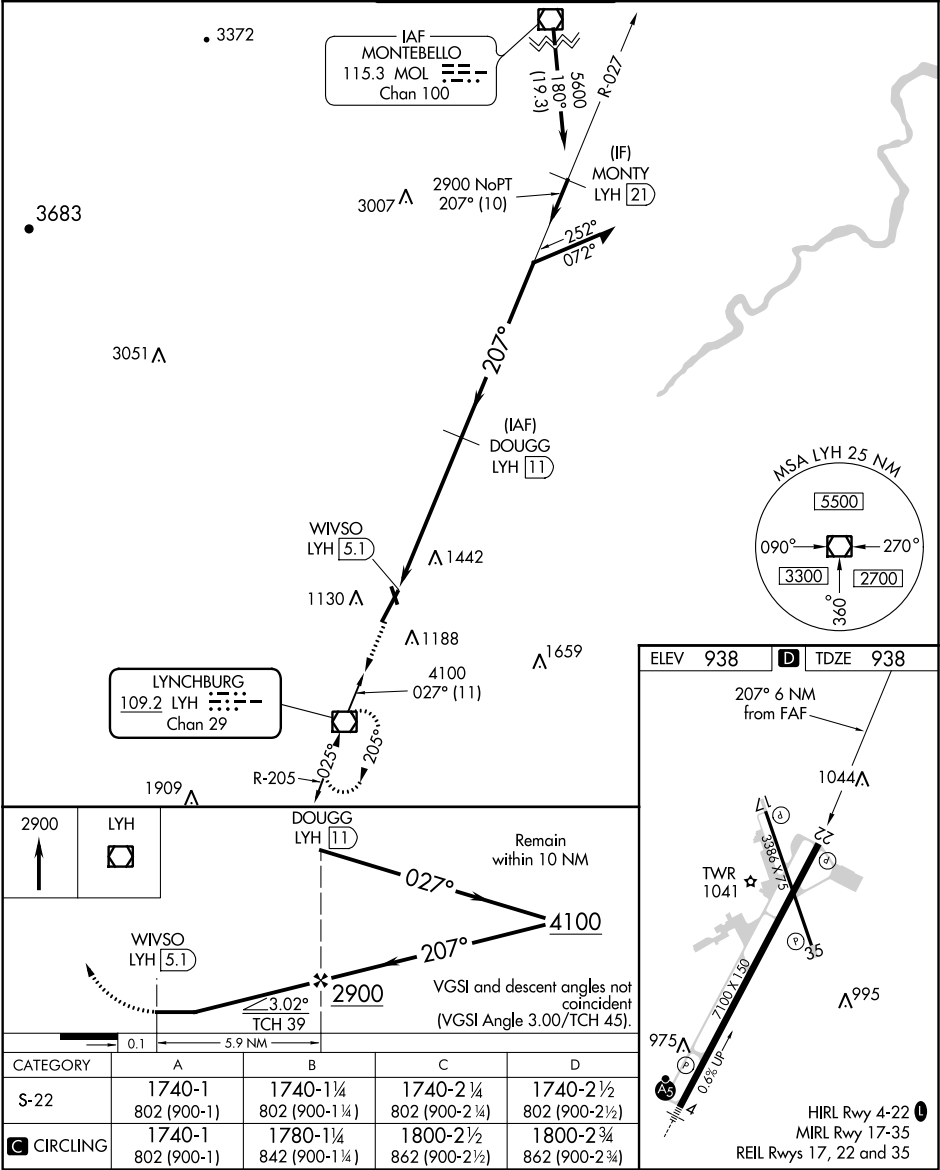
VOR/DME LYH	APP CRS	Rwy Idg	7100
109.2	207°	TDZE	938
Chan 29		Apt Elev	938

VOR RWY 22

LYNCHBURG RGNL/PRESTON GLENN FIELD (LYH)

DME required.	MISSED APPROACH: Climb to 2900 direct LYH VOR/DME and hold.
<div><div></div><div>Rwy 22 helicopter visibility reduction below ¾ SM NA.</div></div> <div><div></div><div>Circling Rwy 17 NA at night.</div></div>	

ATIS 119.8	ROANOKE APP CON 135.0 254,325	LYNCHBURG TOWER ★ 127.65 (CTAF) 257.8	GND CON 121.9	UNICOM 122.95
---------------	----------------------------------	--	------------------	------------------



VOR RWY 22

NE-3, 31 DEC 2020 to 28 JAN 2021

NE-3, 31 DEC 2020 to 28 JAN 2021