

ABERDEEN, MARYLAND

WAAS CH 70342 W22A	APCH CRS 218°	Rwy ldg TDZE Arpt Elev	7998 45 45
--------------------------	------------------	------------------------------	------------------

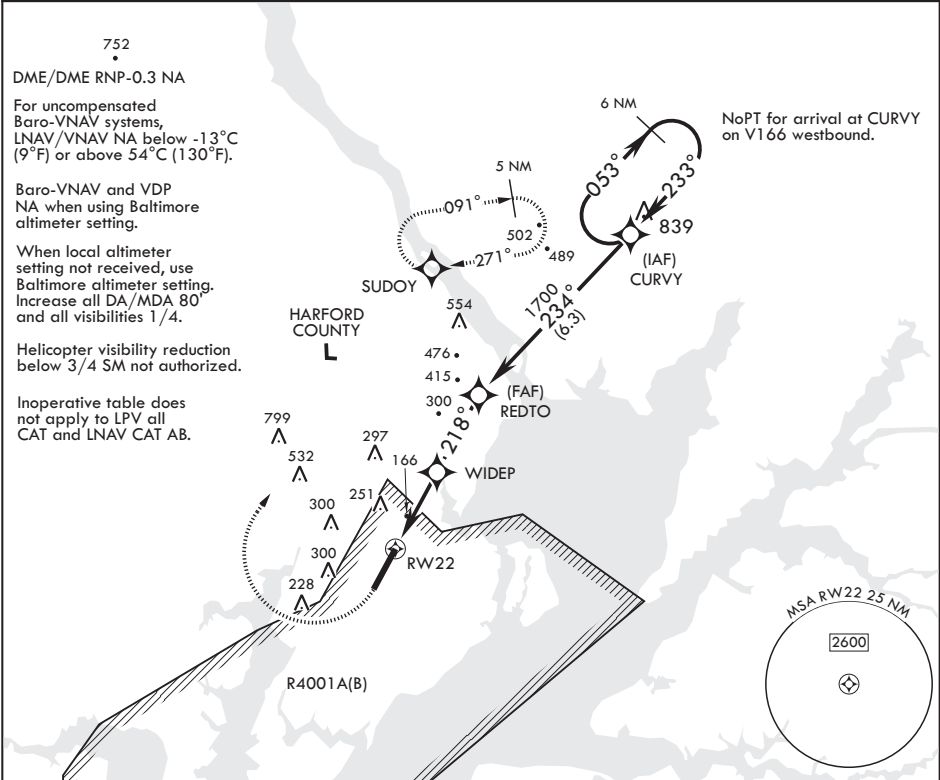
AL-555 (USA)

RNAV (GPS) RWY 22

PHILLIPS AAF (ABERDEEN PROVING GROUND) (KAPG)

	MISSED APPROACH: Climb to 500, then climbing right turn to 2000 direct SUDOY and hold.
--	--

ATIS ★ 124.425	POTOMAC APP CON/DEP CON 125.525 291.625	TOWER ★ 126.15 229.6	GND CON 121.9
-------------------	--	-------------------------	------------------



500 ↑	2000 ↷	SUDOY 	VGSI and RNAV glidepath not coincident (VGSI Angle 3.00°/TCH 49°).	CURVY 053° 2100	ELEV 45	TDZE 45
Visual segment - Obstacles						
*LNAV only						
<p>RW22 *1.2 NM to RW22 900 * 218° 234° 1700 233° 053° 2100</p> <p>GP 3.00° TCH 59</p> <p>2.5 NM 2.5 NM</p>						
CATEGORY	A		B	C	D	
LPV DA	295-1		250	(300-1)		
LNAV/VNAV DA	560-1 3/4		515	(600-1 3/4)		
LNAV MDA	560-1 515 (600-1)		560-1 3/4		515 (600-1 3/4)	
CIRCLING	560-1 515 (600-1)		640-1 595 (600-1)		880-2 3/4 835 (900-2 3/4)	

TWR 147

7000 x 700

218° to RW22

HIRL all Rwy's
REIL Rwy 22

ABERDEEN, MARYLAND

39°28'N - 76°10'W PHILLIPS AAF (ABERDEEN PROVING GROUND) (KAPG)

Amndt 2C 31DEC20

RNAV (GPS) RWY 22

NE-3, 31 DEC 2020 to 28 JAN 2021

NE-3, 31 DEC 2020 to 28 JAN 2021