


## ILS or LOC RWY 19R

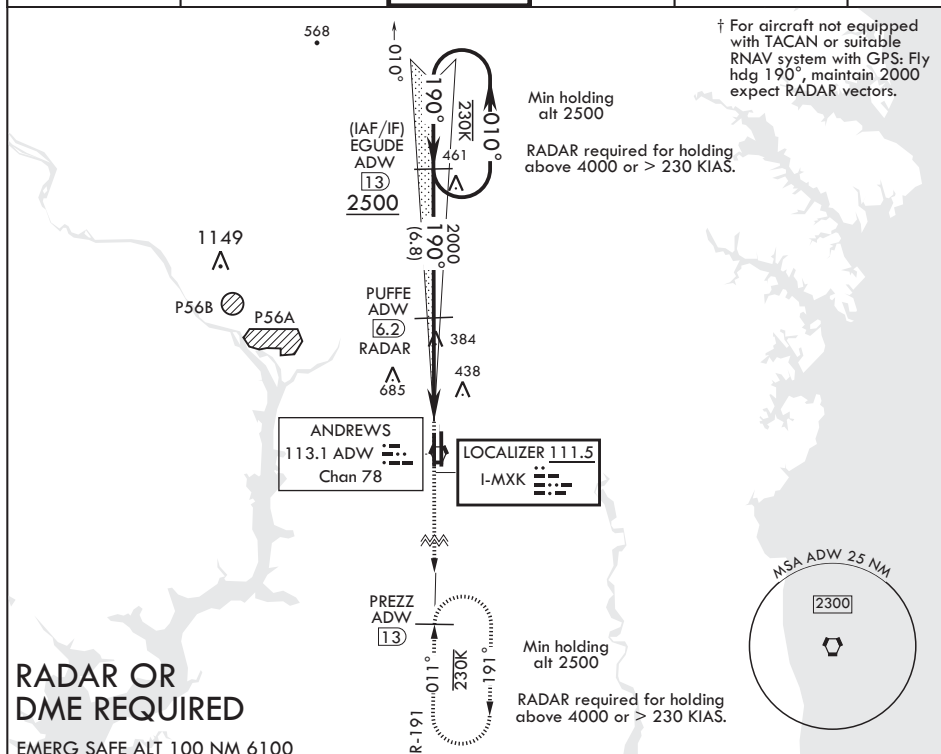
LOC I-MXK <b><u>111.5</u></b>	APCH CRS <b>190°</b>	Rwy Idg <b>9318</b> TDZE <b>274</b> Arpt Elev <b>280</b>
----------------------------------	-------------------------	--

AL-561 (USAF)

JOINT BASE ANDREWS (KADW)

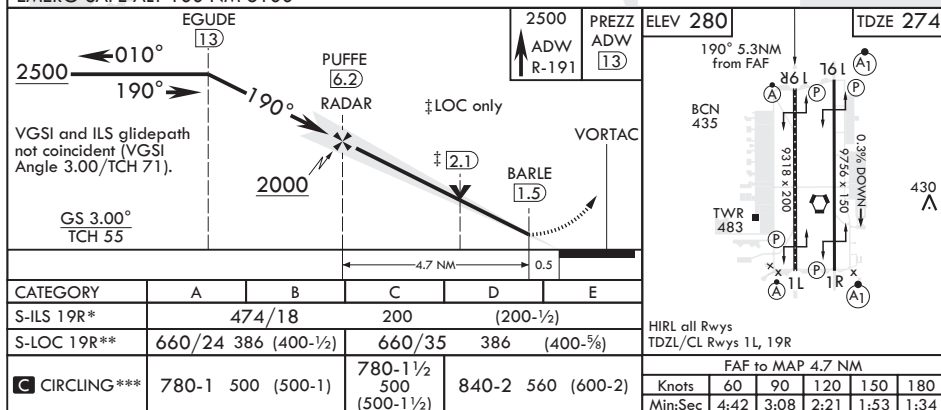
<p> <b>T</b> * When ALS inop, increase RVR to 40, vis to 3/4 mile.          When TDZL/CL inop, increase RVR to 24.          ** When ALS inop, increase CAT AB RVR to 55, vis to 1 mile,          CAT CDE RVR to 60, vis to 1 1/8 miles.          *** Circling NA West of Rwy 1L-19R.       </p>	<p> <b>ALS-F-2</b>   </p>	<p> <b>† MISSED APPROACH:</b> Climb to 2500, intercept ADW VORTAC R-191 to PREZZ and hold.       </p>
---	--	---

ATIS 133.675 251.05	POTOMAC APP CON 128.0 335.5	TOWER 118.4 349.0	GND CON 121.8 275.8	CLNC DEL 127.55 285.475	CPDLC
------------------------	--------------------------------	----------------------	------------------------	----------------------------	-------



## RADAR OR DME REQUIRED

EMERG SAFE ALT 100 NM 6100



CAMP SPRINGS, MARYLAND

38°49'N - 76°52'W

JOINT BASE ANDREWS (KADW)

Amdt 3 15AUG19

## ILS or LOC RWY 19R

NE-3, 31 DEC 2020 to 28 JAN 2021

NE-3, 31 DEC 2020 to 28 JAN 2021