

ILS or LOC RWY 1R

LOC I-VJM <u>110.5</u>	APCH CRS 010°	Rwy Idg 9756 TDZE 265 Arpt Elev 280
----------------------------------	-------------------------	--

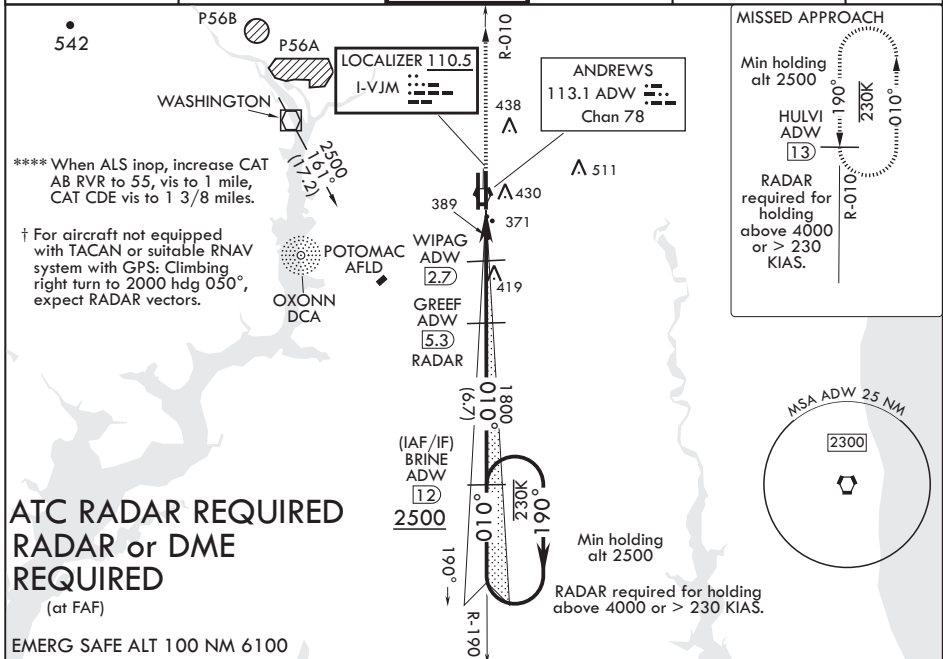
AL-561 (USAF)

JOINT BASE ANDREWS (KADW)

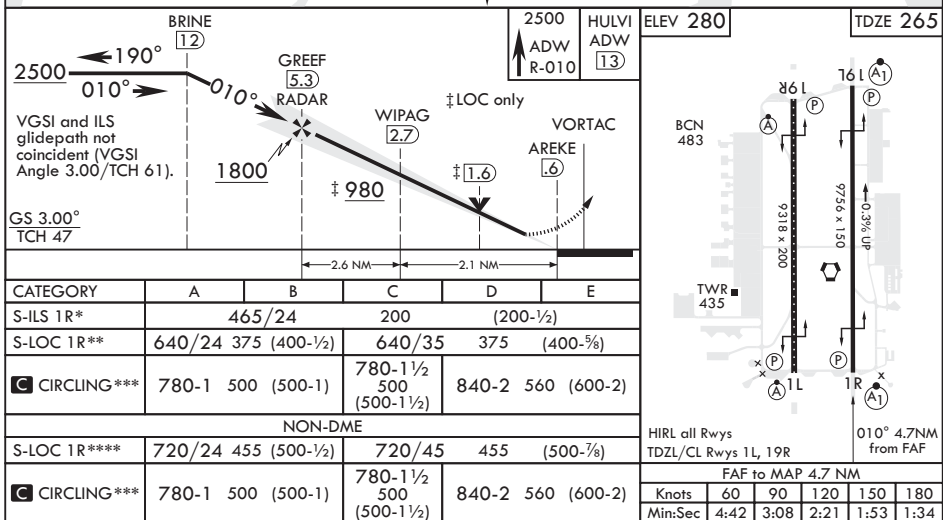
T * When ALS inop, increase RVR to 40, vis to 3/4 mile. RVR 18 authorized with use of Flight Director System or Autopilot System or Heads-Up-Display to DA.
 ** When ALS inop, increase RVR to 55, vis to 1 mile.
 *** Circling not authorized W of Rwy 1L-19R.

ALSF-1 † MISSED APPROACH: Climb to 2500
via ADW VORTAC R-010 to
HULVI/ADW 13 DME and hold.

ATIS 133.675 251.05	POTOMAC APP CON 128.0 335.5	TOWER 118.4 349.0	GND CON 121.8 275.8	CLNC DEL 127.55 285.475	CPDLC
------------------------	--------------------------------	----------------------	------------------------	----------------------------	-------



EMERG SAFE ALT 100 NM 6100



CAMP SPRINGS, MARYLAND

38°49'N - 76°52'W

JOINT BASE ANDREWS (KADW)

ILS or LOC RWY 1R

Orig 15AUG19

NE-3, 31 DEC 2020 to 28 JAN 2021