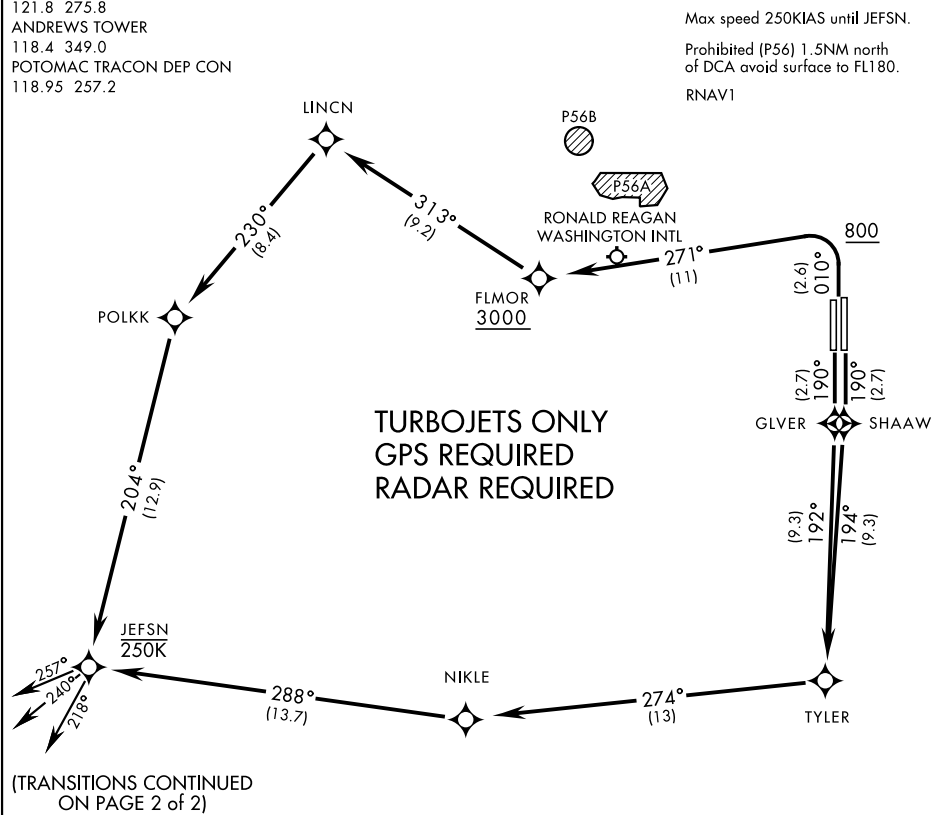


ATIS 133.675 251.05  
CPDLC  
GND CON  
121.8 275.8  
ANDREWS TOWER  
118.4 349.0  
POTOMAC TRACON DEP CON  
118.95 257.2

SL-561 [USAF]  
(PAGE 1 of 2)

TOP ALTITUDE:  
3000



DEPARTURE ROUTE DESCRIPTION

TAKE-OFF RWY 1L/1R: Climb on heading 010° to 800, then climbing left turn to 3000 direct FLMOR. Then via depicted route to JEFSN, thence...

TAKE-OFF RWY 19L: Climb on heading 190° direct SHAAW then via depicted route to JEFSN, thence...

TAKE-OFF RWY 19R: Climb on heading 190° direct GLVER then via depicted route to JEFSN, thence...

... on assigned transition. Maintain 3000, expect further clearance to filed alt within ten (10) minutes after departure.

FLASK TRANSITION (JEFSN1•FLASK)  
GLANC TRANSITION (JEFSN1•GLANC)  
MAULS TRANSITION (JEFSN1•MAULS)  
MELTN TRANSITION (JEFSN1•MELTN)  
RRSIN TRANSITION (JEFSN1•RRSIN)