

CAMP SPRINGS, MARYLAND

RNAV (GPS) RWY 1L

WAAS CH 52205 W01A	APCH CRS 010°	Rwy ldg TDZE Arpt Elev	9318 261 280
--------------------------	------------------	------------------------------	--------------------

AL-561 (USAF)

JOINT BASE ANDREWS (KADW)

⚠	* When ALS inop, increase RVR to 40, vis to ¾. When TDZ/CL lights inop, increase RVR to 24. ** When ALS inop increase vis to 1 1/4 miles. *** When ALS inop increase CAT AB RVR to 55, vis to 1 mile; CAT CDE vis to 1 1/4 miles.	ALS-2	MISSED APPROACH: Climb to 2500 direct EGUDE and hold.
---	---	-------	---

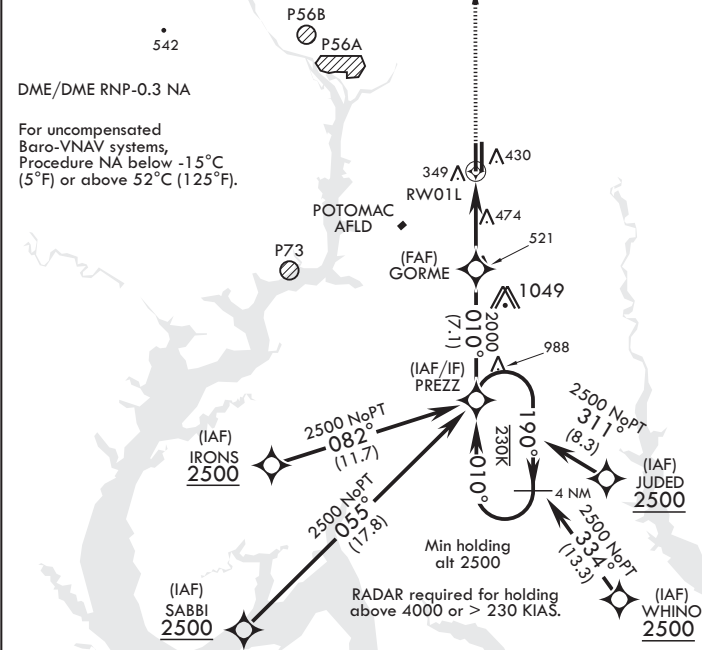
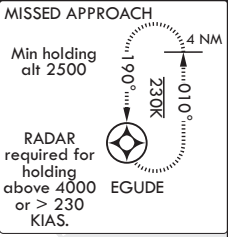
ATIS 133.675 251.05	POTOMAC APP CON 128.0 335.5	TOWER 118.4 349.0	GND CON 121.8 275.8	CLNC DEL 127.55 285.475	CPDLC
------------------------	--------------------------------	----------------------	------------------------	----------------------------	-------

**** Circling not authorized
W of Rwy 1L-19R.

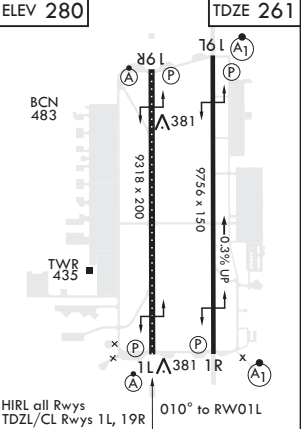
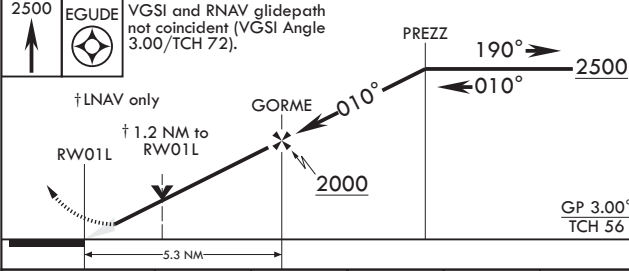
542

DME/DME RNP-0.3 NA

For uncompensated
Baro-VNAV systems,
Procedure NA below -15°C
(5°F) or above 52°C (125°F).



EMERG SAFE ALT 100 NM 6100



CATEGORY	A	B	C	D	E
LPV DA*	461 / 18	200	(200-½)		
LNAV/VNAV DA**	687 / 40	426	(500-¾)		
LNAV MDA***	700/24 439 (500-½)	700/40	439 (500-¾)		
CIRCLING****	780-1 500 (500-1)	780-1 ½ 500 (500-1 ½)	840-2 560 (600-2)		

CAMP SPRINGS, MARYLAND

38°49'N - 76°52'W

JOINT BASE ANDREWS (KADW)

Amndt 2 15AUG19

RNAV (GPS) RWY 1L

NE-3, 31 DEC 2020 to 28 JAN 2021

NE-3, 31 DEC 2020 to 28 JAN 2021