

CAMP SPRINGS, MARYLAND

RNAV (GPS) RWY 1R

WAAS CH 52206 W01B	APCH CRS 010°	Rwy ldg TDZE Arpt Elev	9756 265 280
--------------------------	------------------	------------------------------	--------------------

AL-561 (USAF)

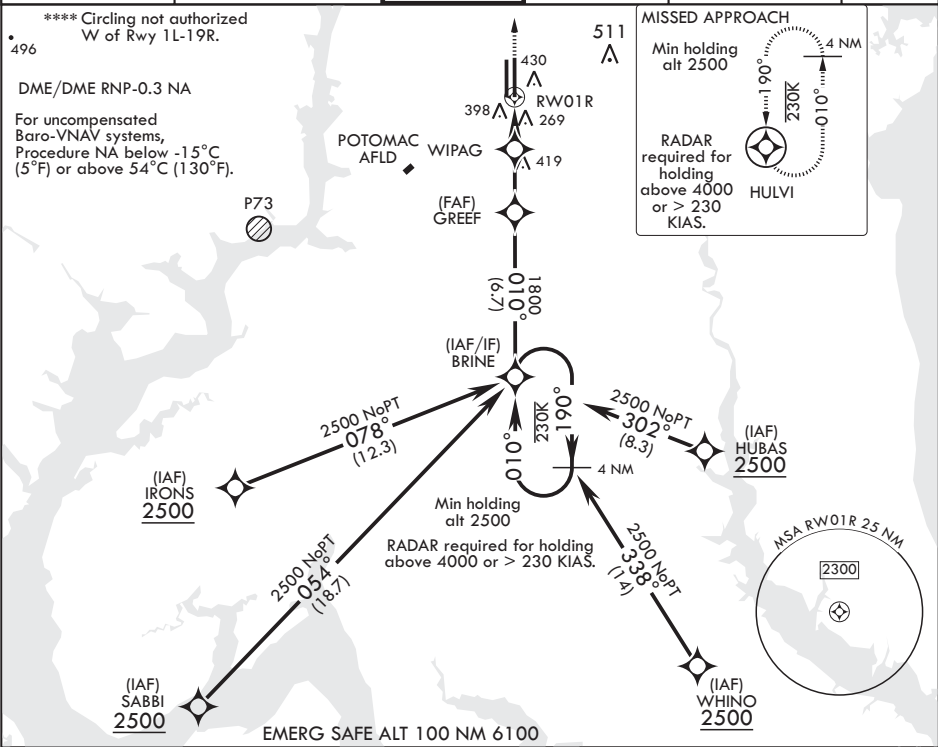
JOINT BASE ANDREWS (KADW)

⚠ * When ALS inop increase RVR to 40, vis to 3/4 mile.
** When ALS inop, increase RVR to 60, vis to 1 1/8 miles.
*** When ALS inop, increase CAT AB RVR to 55, vis to 1 mile;
CAT CDE RVR to 60, vis to 1 1/8 miles.

ALSF-1

MISSED APPROACH: Climb to 2500 direct HULVI and hold.

ATIS 133.675 251.05	POTOMAC APP CON 128.0 335.5	TOWER 118.4 349.0	GND CON 121.8 275.8	CLNC DEL 127.55 285.475	CPDLC
------------------------	--------------------------------	----------------------	------------------------	----------------------------	-------



BRINE

2500

190°

010°

GREEF

1800

WIPAG

960

2.6 NM

2.1 NM

RW01R

2500

HULVI

ELEV 280

TDZE 265

VGSI and RNAV
glidepath not coincident
(VGSI Angle 3.00/TCH 61°).

† LNAV only

† 1.1 NM to RW01R

GP 3.00°
TCH 47

CATEGORY	A	B	C	D	E
LPV DA*	465/24		200	(200-½)	
LNAV/VNAV DA**	660/35		395	(400-¾)	
LNAV MDA***	660/24 395 (400-½)		660/35 395 (400-¾)		
CIRCLING****	780-1 500 (500-1)		780-1 ½ 500 (500-1 ½)	840-2 560 (600-2)	

BCN 483

TWR 435

86

161

9318 x 200

9756 x 150

0.3% UP

252

11

1R

010° to RW01R

HIRL all Rwy's
TDZL/CL Rwy's 1L, 19R

CAMP SPRINGS, MARYLAND

38°49'N - 76°52'W

JOINT BASE ANDREWS (KADW)

Amtdt 2 10OCT19

RNAV (GPS) RWY 1R

NE-3, 31 DEC 2020 to 28 JAN 2021

NE-3, 31 DEC 2020 to 28 JAN 2021