

CAMP SPRINGS, MARYLAND

TACAN RWY 19L

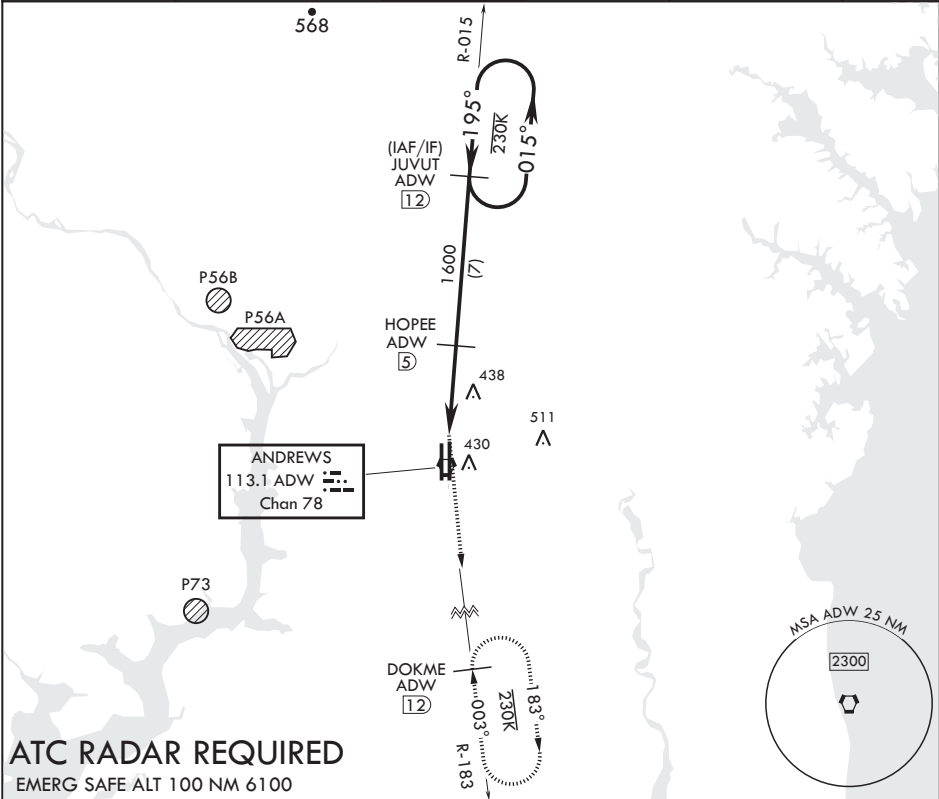
VORTAC ADW 113.1 Chan 78	APCH CRS 195°	Rwy Idg TDZE Arpt Elev	9756 279 280
--------------------------------	------------------	------------------------------	--------------------

AL-561 (USAF)

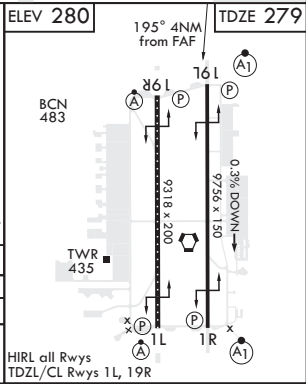
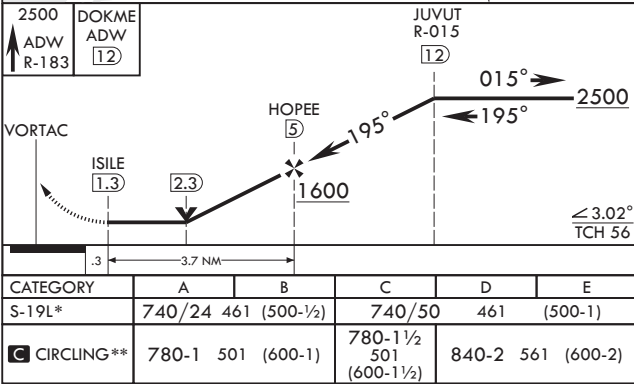
JOINT BASE ANDREWS (KADW)

<b>⚠</b> * When ALS inop, increase CAT AB RVR to 55, vis to 1 mile, CAT CDE vis to 1 3/8 miles. ** Circling not authorized W of Rwy 1L-19R.	ALSF-1 	MISSED APPROACH: Climbing to 2500 via ADW VORTAC R-183 to DOKME and hold.
--	---	---

ATIS 133.675 251.05	POTOMAC APP CON 128.0 335.5	TOWER 118.4 349.0	GND CON 121.8 275.8	CLNC DEL 127.55 285.475	CPDLC
------------------------	--------------------------------	----------------------	------------------------	----------------------------	-------



**ATC RADAR REQUIRED**  
EMERG SAFE ALT 100 NM 6100



CAMP SPRINGS, MARYLAND

38°49'N - 76°52'W

JOINT BASE ANDREWS (KADW)

Amdt 2 02MAR17

TACAN RWY 19L

NE-3, 31 DEC 2020 to 28 JAN 2021

NE-3, 31 DEC 2020 to 28 JAN 2021