

CAMP SPRINGS, MARYLAND

TACAN RWY 1R

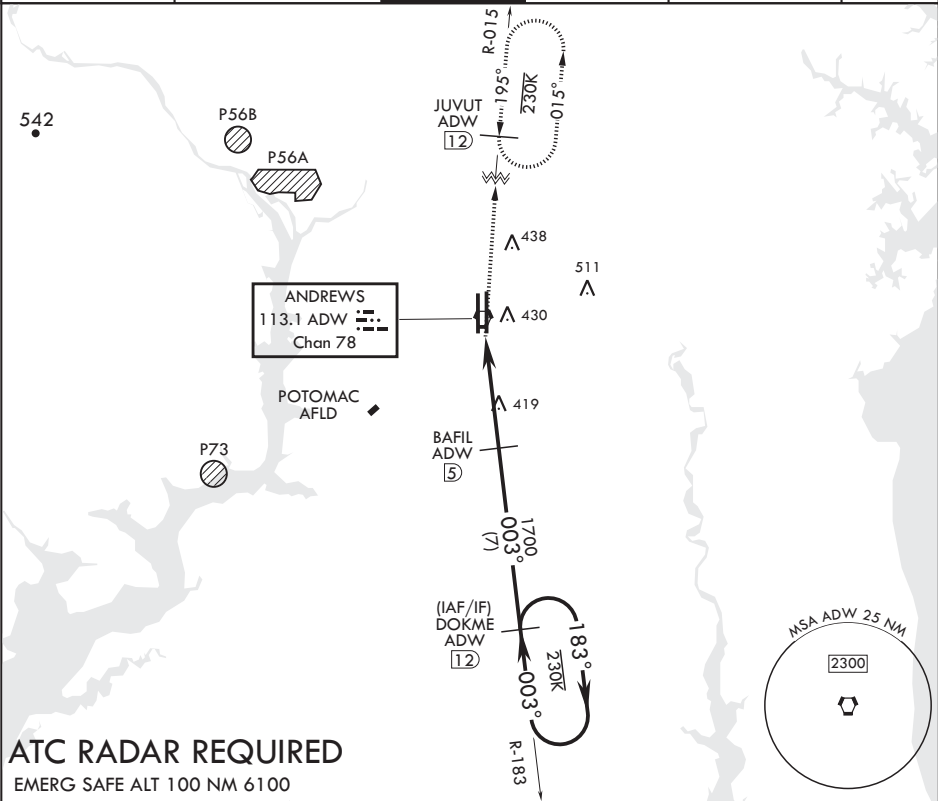
VORTAC ADW 113.1 Chan 78	APCH CRS 003°	Rwy Idg TDZE Arpt Elev	9756 265 280
--------------------------------	------------------	------------------------------	--------------------

AL-561 (USAF)

JOINT BASE ANDREWS (KADW)

<p>⚠ * When ALS inop, increase CAT AB RVR to 55, vis to 1 mile, CAT CDE vis to 1 3/8 miles. ** Circling not authorized W of Rwy 1L-19R.</p>	ALSF-1 	MISSED APPROACH: Climb to 2500 via ADW VORTAC R-015 to JUVUT and hold.
---	---	--

ATIS 133.675 251.05	POTOMAC APP CON 128.0 335.5	TOWER 118.4 349.0	GND CON 121.8 275.8	CLNC DEL 127.55 285.475	CPDLC
------------------------	--------------------------------	----------------------	------------------------	----------------------------	-------



ATC RADAR REQUIRED

EMERG SAFE ALT 100 NM 6100

2500

ADW

R-015

JUVUT

ADW

12

2500

DOKME

R-183

12

183°

2500

003°

1700

003°

1700

1.9

4.3 NM

VORTAC

MOPDE

7

≤ 2.95°

TCH 61

0.1

CATEGORY	A	B	C	D	E
S-1R*	720/24 455 (500-½)	720/45 455 (500-¾)			
C CIRCLING**	780-1 501 (600-1)	780-1½ 501 (600-1½)	840-2 561 (600-2)		

ELEV 280

TDZE 265

BCN 483

TWR 435

9318 × 200

9756 × 150

0.3% UP

16 L

16 R

1 L

1 R

003° 4.4NM from FAF

HIRL all Rws

TDZL/CL Rws 1L, 19R

CAMP SPRINGS, MARYLAND

38°49'N - 76°52'W

JOINT BASE ANDREWS (KADW)

Amdt 2 02MAR17

TACAN RWY 1R

NE-3, 31 DEC 2020 to 28 JAN 2021

NE-3, 31 DEC 2020 to 28 JAN 2021