

CAMP SPRINGS, MARYLAND

TACAN-A

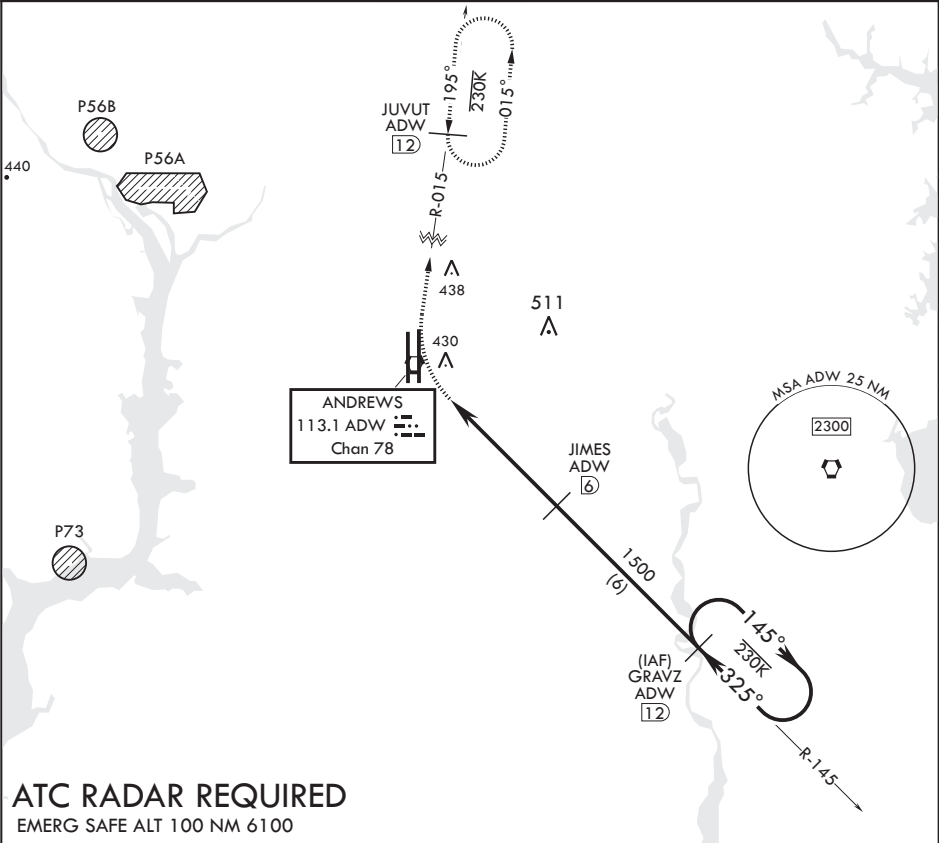
VORTAC ADW 113.1 Chan 78	APCH CRS 325°	Rwy Idg TDZE Arprt Elev	N/A N/A 280
--------------------------------	------------------	-------------------------------	-------------------

AL-561 (USAF)

JOINT BASE ANDREWS (KADW)

* Circling not authorized west of Rwy 1L-19R.		MISSED APPROACH: Climbing right turn to 2500 via ADW R-015 to JUVUT and hold.	
---	--	---	--

ATIS 133.675 251.05	POTOMAC APP CON 128.0 335.5	TOWER 118.4 349.0	GND CON 121.8 275.8	CLNC DEL 127.55 285.475	CPDLC
------------------------	--------------------------------	----------------------	------------------------	----------------------------	-------



ATC RADAR REQUIRED  
EMERG SAFE ALT 100 NM 6100

2500

ADW

R-015

JUVUT

ADW

12

GRAVZ

12

ELEV 280

VORTAC

JOLOS

1.5

JAMES

6

1500

145°

325°

2500

4.5 NM

CATEGORY	A	B	C	D	E
<div>CIRCLING*</div>	780-1¼ 500 (500-1¼)		780-1½ 500 (500-1½)	840-2 560 (600-2)	

BCN 483

TWR 435

86 L

161

931.8 x 200

975.6 x 150

0.3% UP

325° 5.6NM from FAF

HIRL all Rwys

TDZL/CL Rwys 1L, 19R

CAMP SPRINGS, MARYLAND

38°49'N - 76°52'W

JOINT BASE ANDREWS (KADW)

Amdt 2 12OCT17

TACAN-A

NE-3, 31 DEC 2020 to 28 JAN 2021

NE-3, 31 DEC 2020 to 28 JAN 2021