

DOVER, DELAWARE

RNAV (GPS) RWY 19

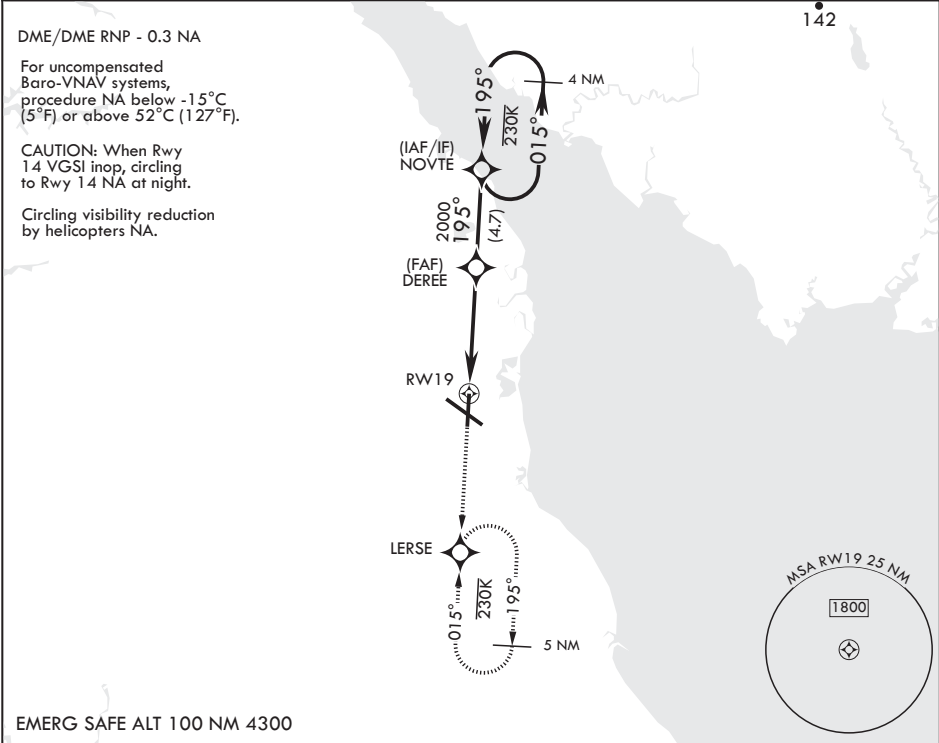
WAAS CH 52208 W19A	APCH CRS 195°	Rwy Idg TDZE 23 Arpt Elev 29
--------------------------	------------------	------------------------------------

AL-562 (USAF)

DOVER AFB (KDOV)

V * When ALS inop, increase RVR to 40, vis to 3/4 mile. ** When ALS inop, increase RVR to 45, vis to 7/8 miles. *** When ALS inop, increase CAT AB RVR to 55, vis to 1 mile, CAT CD vis to 1 1/4 miles.	ALSF-1 	MISSED APPROACH: Climb to 2000 direct LERSE and hold.
--	------------	--

ATIS 127.825 273.5	APP CON 132.425 257.875	TOWER 126.35 279.625	GND CON 118.875 225.4	CLNC DEL 125.55 289.4
-----------------------	----------------------------	-------------------------	--------------------------	--------------------------



2000

↑

LERSE

VGSI and RNAV glidepath not coincident (VGSI Angle 3.00/TCH 75).

† LNAV only

DEREE

NOVTE

015°

2000

GP 3.00°

TCH 55

RWY 19

† 1.1 NM to RWY 19

6 NM

195°

195°

ELEV 29

TDZE 23

Rwy 14 Idg 8652'

195° to RWY 19

61

9,602 x 150

12,903 x 150

1

2

⊙

⊙

⊙

⊙

⊙

⊙

⊙

⊙

⊙

⊙

TWR

BCN 198

REL Rwy 32

HIRL all Rwy

TDZL/CL Rwy 1

CATEGORY	A	B	C	D
LPV DA*	223/24	200	(200-1/2)	
LNAV/VNAV DA**	310/24 287 (300-1/2)	321/24 298 (300-1/2)	329/24 306 (300-1/2)	340/24 317 (400-1/2)
LNAV MDA***	460/24 437 (500-1/2)	460/40 437 (500-3/4)		
CIRCLING	500-1 471 (500-1)	520-1 491 (500-1)	540-1 1/2 511 (600-1 1/2)	580-2 551 (600-2)

DOVER, DELAWARE
Amdt 2 05DEC19

39°08'N - 75°28'W

DOVER AFB (KDOV)

RNAV (GPS) RWY 19