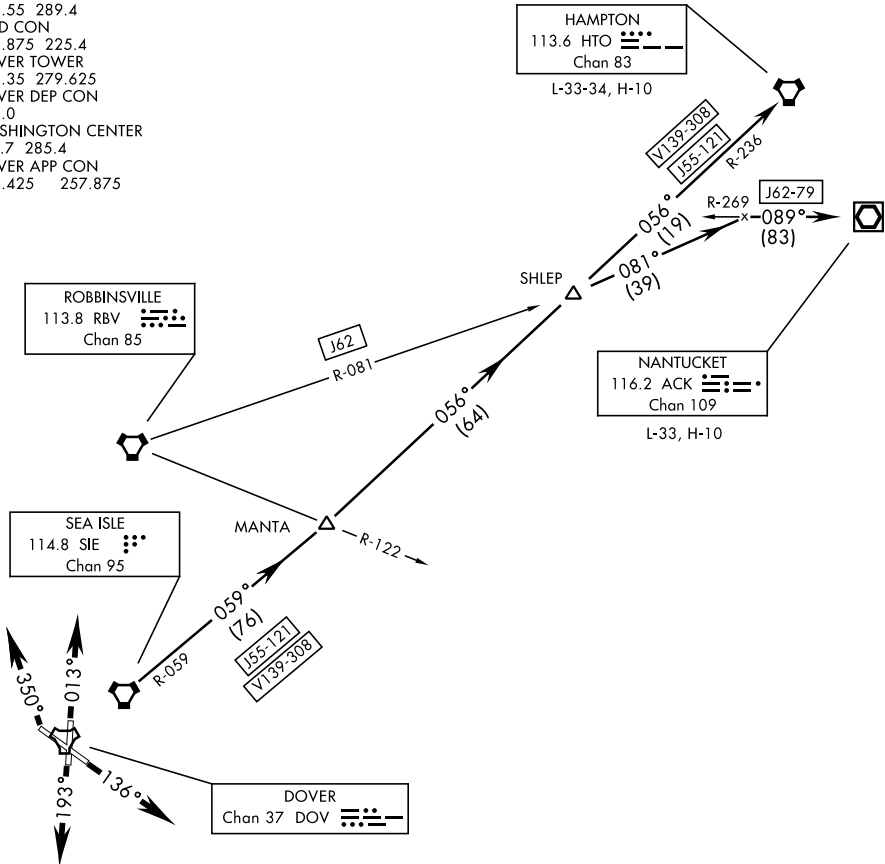


ATIS 127.825 273.5
CLINC DEL
125.55 289.4
GND CON
118.875 225.4
DOVER TOWER
126.35 279.625
DOVER DEP CON
323.0
WASHINGTON CENTER
127.7 285.4
DOVER APP CON
132.425 257.875



RWY 32 TODA 10,070'

NOTE: Chart not to scale

RADAR REQUIRED

▼

DEPARTURE ROUTE DESCRIPTION

TAKE-OFF RWY 1: Climb on a track of 013° for RADAR vectors to SIE VORTAC. Thence...

TAKE-OFF RWY 14: Climb on a track of 136° for RADAR vectors to SIE VORTAC. Thence...

TAKE-OFF RWY 19: Climb on a track of 193° for RADAR vectors to SIE VORTAC. Thence...

TAKE-OFF RWY 32: Climb on a track of 350° for RADAR vectors to SIE VORTAC. Thence...

Via (Transition) or (Assigned Route).

HAMPTON TRANSITION: (SIE5•HTO) Via SIE R-059 and HTO VORTAC R-236 to HTO.

NANTUCKET TRANSITION: (HIGH ALT ONLY) (SIE5•ACK) Via SIE R-059, HTO VORTAC R-236 and J62 to ACK VOR/DME.

NE-3, 31 DEC 2020 to 28 JAN 2021

NE-3, 31 DEC 2020 to 28 JAN 2021