

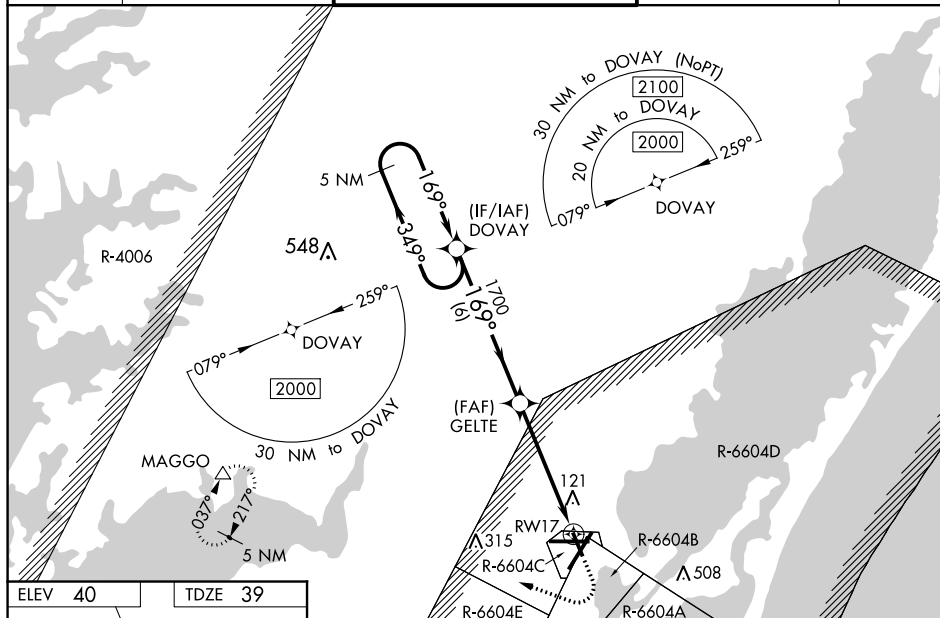
WAAS CH 69632 W17A	APP CRS 169°	Rwy Idg 4808 TDZE 39 Apt Elev 40
--	------------------------	---

RNAV (GPS) RWY 17
WALLOPS FLIGHT FACILITY (WAL)

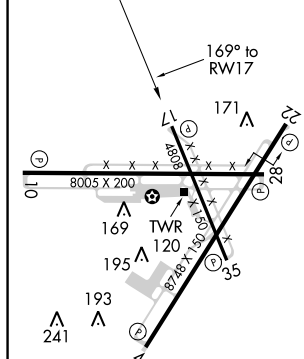
▼ For uncompensated Baro-VNAV systems, LNAV/VNAV NA below -11°C (13°F) or above 54°C (130°F), DME/DME RNP-0.3 NA. Helicopter visibility reduction below ¾ SM NA. **▲** When local altimeter setting not received, use Salisbury altimeter setting: increase LPV DA to 372 and all Cats visibility ½ mile, increase LNAV/VNAV DA to 437 and all Cats visibility ¼ mile, increase all MDA 60 feet and LNAV Cats C/D visibility ½ mile and Circling Cat C visibility ¼ mile. Baro-VNAV and VDP NA when using Salisbury altimeter setting.

MISSED APPROACH: Climb to 600 then climbing right turn to 2000 direct MAGGO and hold.

ASOS 119.175	PATUXENT APP CON ★ 127.95 314.0	WALLOPS TOWER ★ 126.5 (CTAF) 0 306.975 (CTAF) 0	GND CON 127.875 269.325	CLNC DEL 121.7
------------------------	---	---	-----------------------------------	--------------------------



ELEV 40	TDZE 39
---------	---------



REIL all Rwy's
HIRI Rwy's 4-22, 10-28 and 17-35

WALLOPS ISLAND, VIRGINIA
Amdt 1B 21JUL16

37°56'N-75°28'W

WALLOPS FLIGHT FACILITY (WAL)
RNAV (GPS) RWY 17

NE-3, 31 DEC 2020 to 28 JAN 2021

Diagram illustrating the RNAV approach for RW17. The diagram shows a 5 NM Holding Pattern at 2000 feet, a DOVAY fix, a 349°/169° turn, a 1700 feet altitude, a GELTE fix, a 1.3 NM distance to RW17, and a 6 NM distance from DOVAY to GELTE. The diagram also shows the GP 3.00° TCH 55 and the RW17 runway. A table below the diagram provides the approach data for LPV, RNAV/VNAV, and RNAV MDA, and a table for CIRCLING.

CATEGORY	A	B	C	D
LPV DA	322-1	283 (300-1)		
RNAV/VNAV DA	387-1½	348 (400-1½)		
RNAV MDA	500-1 461 (500-1)	500-1¾ 461 (500-1¾)		
CIRCLING	600-1 560 (600-1)	620-1½ 580 (600-1½)	860-2¾ 820 (900-2¾)	