

WAAS
CH **61105**
W03A

APP CRS
030°

Rwy Idg **6801**
TDZE **640**
Apt Elev **640**

RNAV (GPS) RWY 3

CHARLOTTESVILLE-ALBEMARLE (CHO)

▼

▲

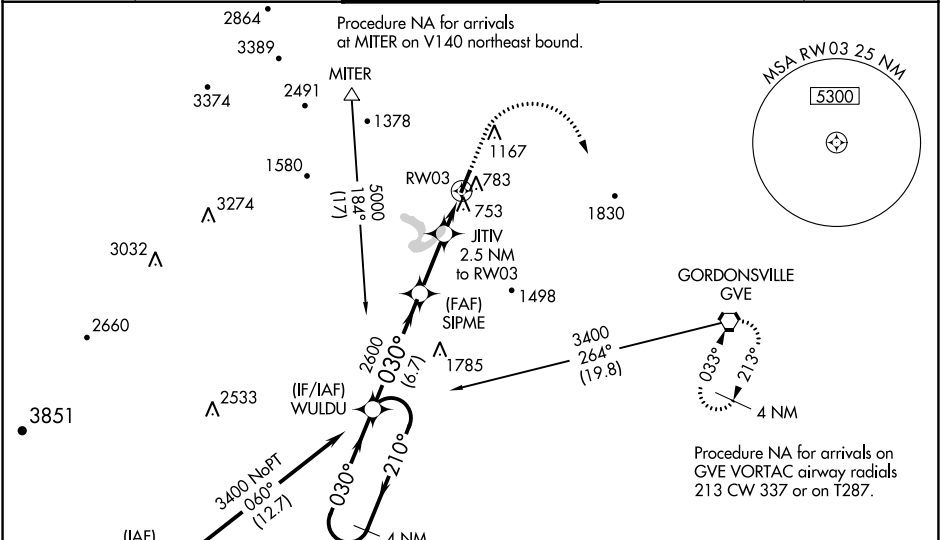
For uncompensated Baro-VNAV systems, LNAV/VNAV NA below -12°C (11°F) or above 54°C (130°F). DME/DME RNP-0.3 NA. When local altimeter setting not received, use Orange altimeter setting and increase LPV DA to 912, LNAV/VNAV DA to 986, and all MDA 80 feet; increase LNAV/VNAV all Cats visibility ½ mile, Circling Cats C/D visibility ¼ mile, and LNAV Cats C/D visibility ⅜ mile. Baro-VNAV and VDP NA when using Orange altimeter setting. For inoperative MALS, increase LNAV/VNAV Cats C/D to ⅜ mile and LNAV Cats C/D visibility to 1 mile. For inoperative MALS when using Orange altimeter setting, increase LPV all Cats visibility to ⅜ mile, and LNAV Cats C/D visibility to 1 ⅜ mile.

MALS

MISSED APPROACH:

Climb to 2000 then climbing right turn to 4000 direct GVE VORTAC and hold.

ATIS 118.425	POTOMAC APP CON 132.85 323.125	CHARLOTTESVILLE TOWER ★ 124.5 (CTAF) 0 338.275	GND CON 121.9 338.275	UNICOM 122.95
------------------------	--	--	---------------------------------	-------------------------



ELEV 640 D TDZE 640

CATEGORY	A	B	C	D
LPV DA	840-1/2 200 (200-1/2)			
LNAV/VNAV DA	914-1/2 274 (300-1/2)			
LNAV MDA	1020-1/2 380 (400-1/2)		1020-5/8 380 (400-5/8)	
CIRCLING	1060-1 420 (500-1)	1100-1 460 (500-1)	1500-2 1/2 860 (900-2 1/2)	1500-2 3/4 860 (900-2 3/4)

HIRL Rwy 3-21 0
REIL Rwy 21 0