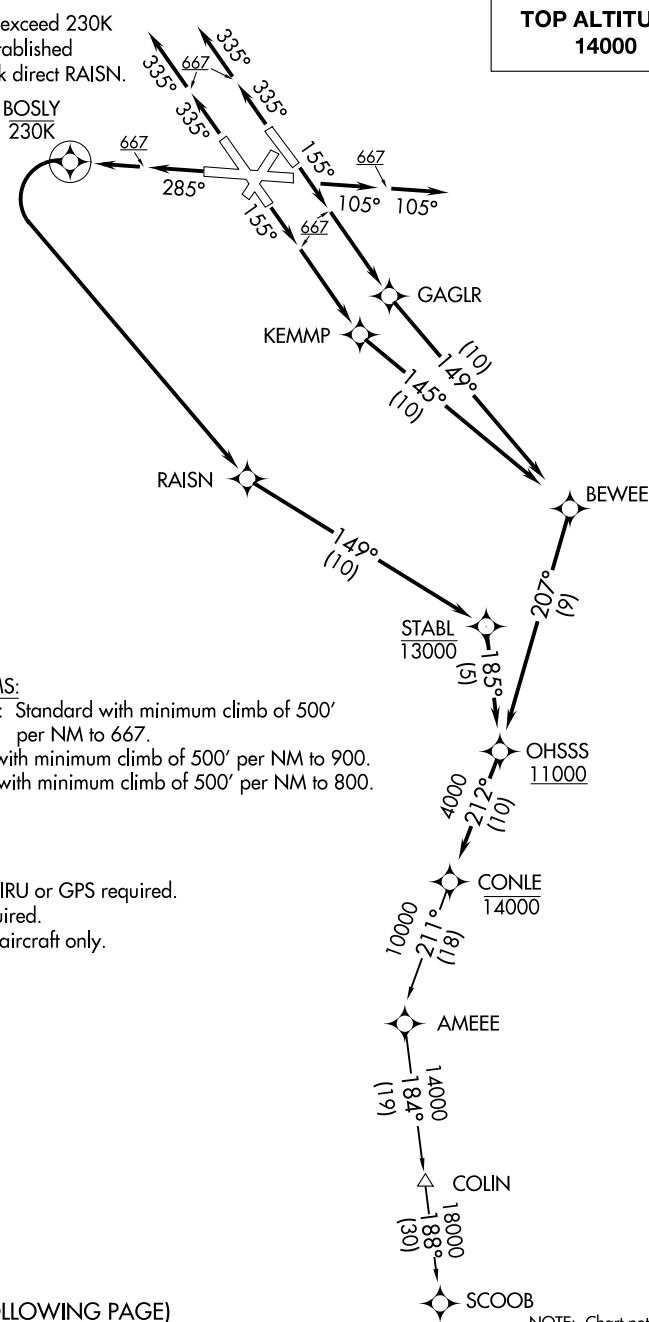


D-ATIS
115.1 127.8
CLNC DEL
118.05
CPDLC
GND CON
121.9
BALTIMORE TOWER
119.4 257.8
POTOMAC DEP CON
124.55 317.425

Do not exceed 230K
until established
on track direct RAISN.

TOP ALTITUDE:
14000



TAKEOFF MINIMUMS:
Rwys 10, 15L/R, 28: Standard with minimum climb of 500'
per NM to 66Z.
Rwy 33L: Standard with minimum climb of 500' per NM to 900.
Rwy 33R: Standard with minimum climb of 500' per NM to 800.

NOTE: RNAV 1
NOTE: DME/DME/IRU or GPS required.
NOTE: RADAR required.
NOTE: For turbojet aircraft only.

(NARRATIVE ON FOLLOWING PAGE)

NOTE: Chart not to scale.