

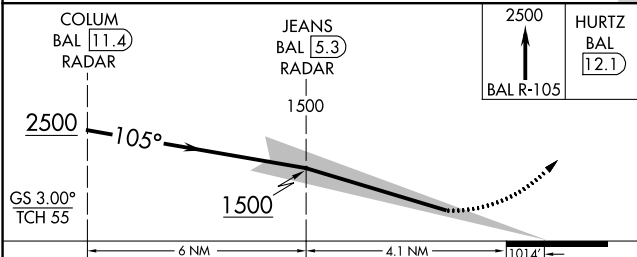
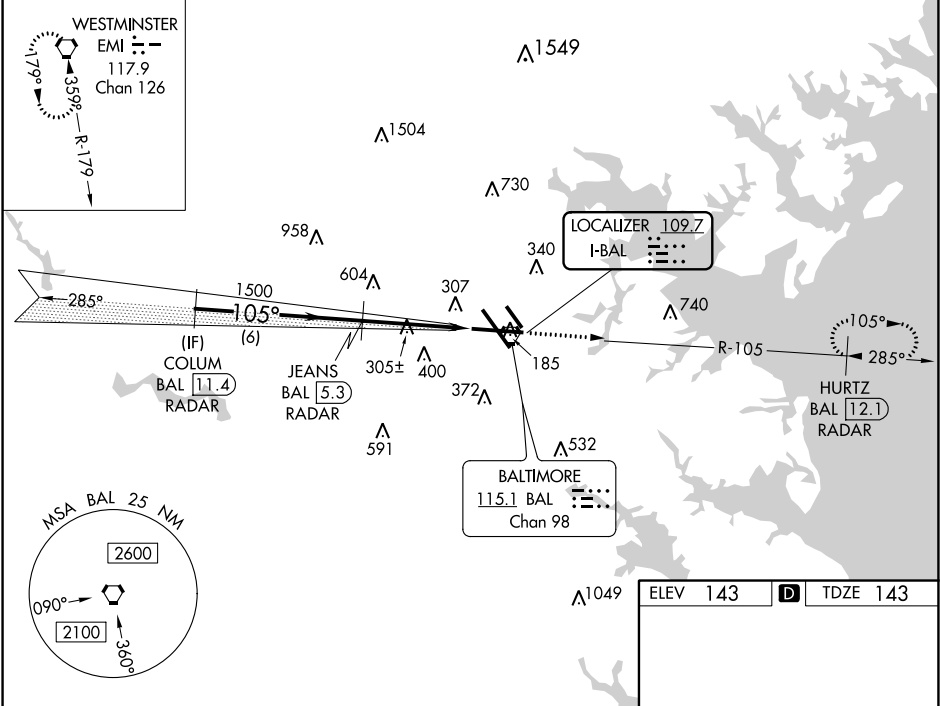
LOC I-BAL	APP CRS	Rwy Idg	9953
109.7	105°	TDZE	143
		Apt Elev	143

BALTIMORE/ WASHINGTON INTL THURGOOD MARSHALL (BWI) ILS RWY 10 (SA CAT I)

RADAR required for procedure entry. DME required.	ALSIF-2	MISSED APPROACH: Climb to 2500 on BAL VORTAC R-105 to HURTZ/BAL 12.1 DME/RADAR and hold.
Requires specific OPSPEC, MSPEC, or LOA approval and use of HUD to DH.		

D-ATIS	POTOMAC APP CON	BALTIMORE TOWER	GND CON	CLNC DEL
115.1 127.8	119.0 282.275 (020°-100°) 119.7 290.475 (131°-180°) 124.55 317.425 (101°-130°) 128.7 307.9 (181°-019°)	119.4 257.8	121.9	118.05

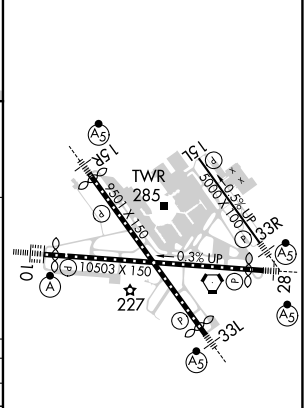
ALTERNATE MISSED APCH FIX	CPDLC
---------------------------	-------



CATEGORY	A	B	C	D
S-ILS 10	RA 191/14 150 DA 293			

SA CATEGORY I ILS - SPECIAL AIRCREW & AIRCRAFT CERTIFICATION REQUIRED

ELEV 143	TDZE 143
----------	----------



TDZ/CL Rwy 10 and 33L
REIL Rwy 15L and 33R
HIRL all rwy

NE-3, 31 DEC 2020 to 28 JAN 2021

NE-3, 31 DEC 2020 to 28 JAN 2021