
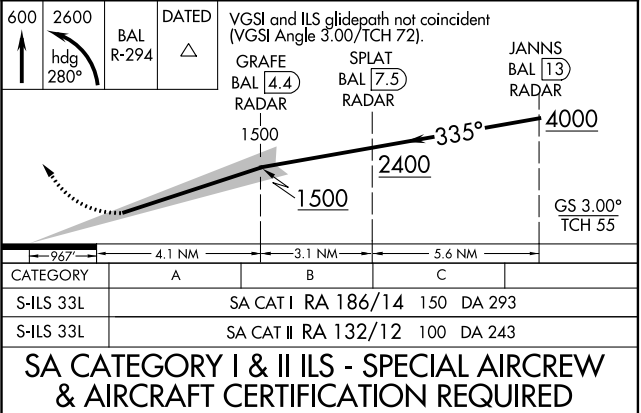
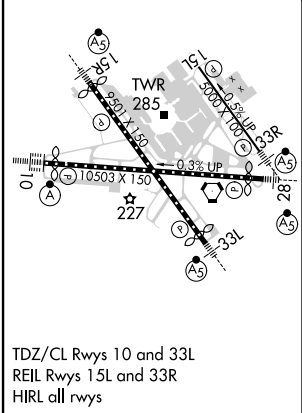
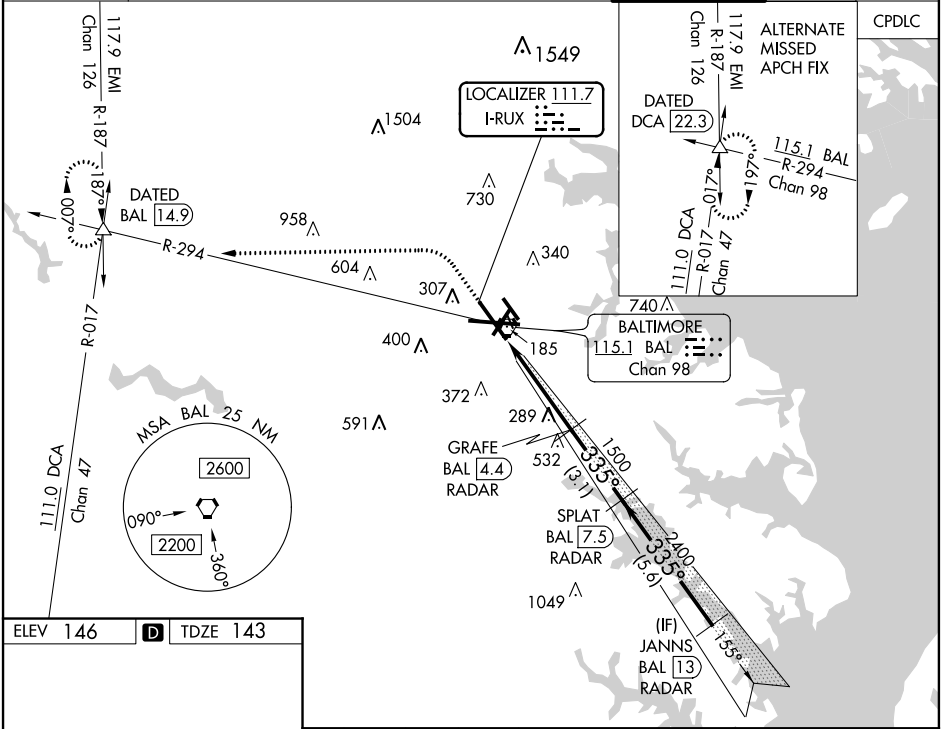


LOC I-RUX 111.7	APP CRS 335°	Rwy ldg TDZE 143 Apt Elev 146
---------------------------	------------------------	---

ILS RWY 33L (SA CAT I & II)
BALTIMORE/WASHINGTON INTL THURGOOD MARSHALL (BWI)

RADAR required for procedure entry.		MALSR 	MISSED APPROACH: Climb to 600 then climbing left turn to 2600 on heading 280° and BAL R-294 to DATED INT/BAL 14.9 DME and hold.
-------------------------------------	--	--	---

D-ATIS 115.1 127.8	POTOMAC APP CON (020°-100°) 119.0 282.275 (101°-130°) 119.7 290.475 (131°-180°) 124.55 317.425 (181°-019°) 128.7 307.9	BALTIMORE TOWER 119.4 257.8	GND CON 121.9	CLNC DEL 118.05
------------------------------	---	---------------------------------------	-------------------------	---------------------------



NE-3, 31 DEC 2020 to 28 JAN 2021

NE-3, 31 DEC 2020 to 28 JAN 2021