


ILS or LOC RWY 28
L THURGOOD MARSHALL (BWI)

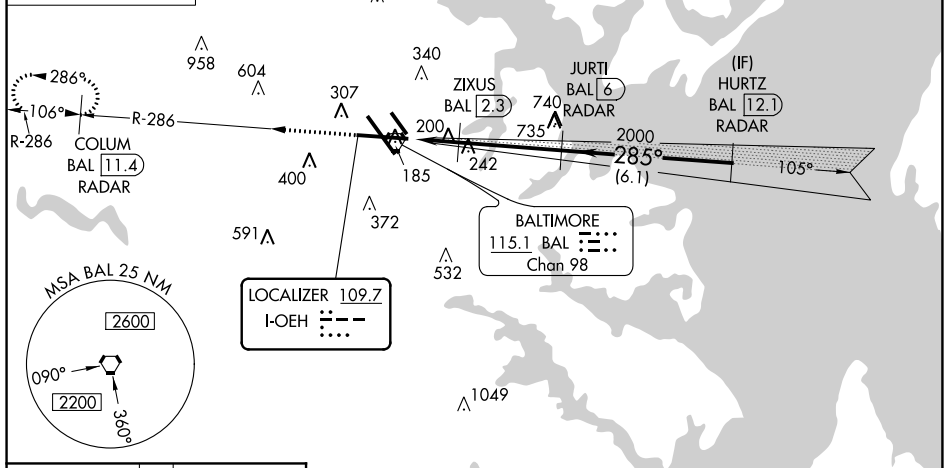
MALSR

MISSED APPROACH: Climb to 2500 on BAL VORTAC R-286 to COLUM/BAL 11.4 DME/RADAR and hold.

ALTERNATE MISSED
APCH FIX
WESTMINSTER
EMI 
117.9
Chan 126
R-179

RADAR REQUIRED

CPDLC



TWR
285

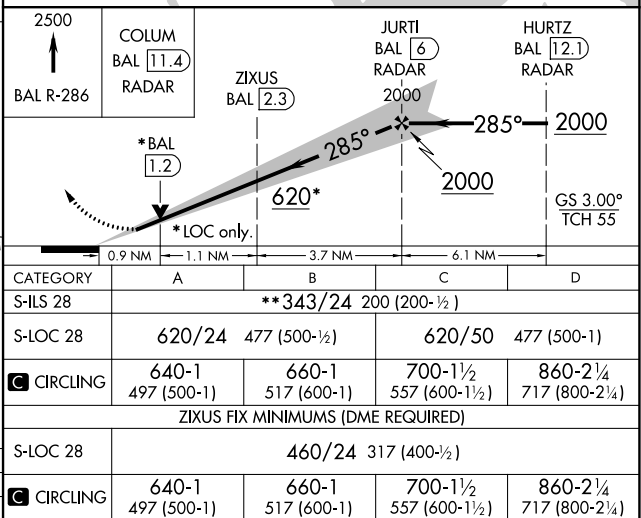
0.3% UP

0.3% DOWN

285° 5.7 NM from FAF

TDZ/CL Rwy's 10 and 33L
REIL Rwy's 15L and 33R
HIRL all rwy's

	FAF to MAP 5.7 NM				
Knots	60	90	120	150	180
Min:Sec	5:42	3:48	2:51	2:17	1:54



NE-3, 31 DEC 2020 to 28 JAN 2021

NE-3, 31 DEC 2020 to 28 JAN 2021