

LOC I-BWI 111.95	APP CRS 335°	Rwy Idg TDZE Apt Elev	5000 124 143
----------------------------	------------------------	-----------------------------	---

BALTIMORE/
WASHINGTON INTL THURGOOD MARSHALL (BWI)

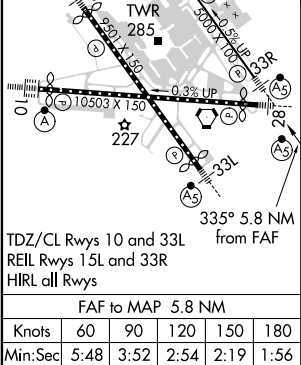
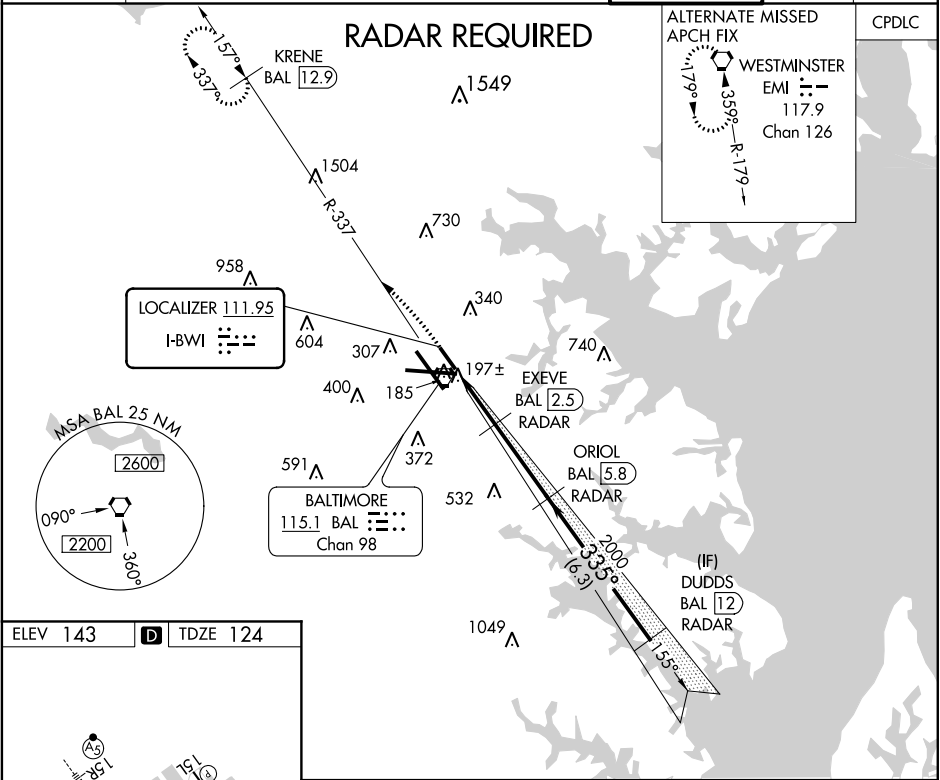
ILS or LOC RWY 33R

▼ DME required. DME from BAL VORTAC. Simultaneous reception of I-BWI and BAL DME required. Simultaneous approach authorized with Rwy 33L. Inoperative table does not apply to S-ILS 33R. For inoperative MALSR, increase S-LOC 33R visibility to RVR 5000. Helicopter visibility reduction below RVR 4000 NA.

MALSR

MISSED APPROACH: Climb to 3000 on heading 335° and BAL VORTAC R-337 to KRENE/BAL 12.9 DME and hold.

D-ATIS 115.1 127.8	POTOMAC APP CON 119.0 282.275 (020°-100°) 119.7 290.475 (131°-180°) 124.55 317.425 (101°-130°) 128.7 307.9 (181°-019°)	BALTIMORE TOWER 119.4 257.8	GND CON 121.9	CLNC DEL 118.05
------------------------------	--	---------------------------------------	-------------------------	---------------------------



3000	BAL R-337	KRENE BAL 12.9	ORiol BAL 5.8 RADAR	DUDDS BAL 12 RADAR
hdg 335°				
*LOC only.	*BAL 1.3	EXEVE BAL 2.5 RADAR	2000	3000
			*940	2000
	1.2 NM	1.3 NM	3.3 NM	6.3 NM
CATEGORY	A	B	C	D
S-ILS 33R	333/40	209 (200-¾)		NA
S-LOC 33R	540/40	416 (400-¾)		NA
	640-1	660-1		
CIRCLING	497 (500-1)	517 (600-1)		NA

NE-3, 31 DEC 2020 to 28 JAN 2021

NE-3, 31 DEC 2020 to 28 JAN 2021