

WAAS

CH **69208**

W33B

APP CRS

335°

Rwy Idg

5000

TDZE

124

Apt Elev

143

BALTIMORE/

RNAV (GPS) RWY 33R

WASHINGTON INTL THURGOOD MARSHALL (BWI)

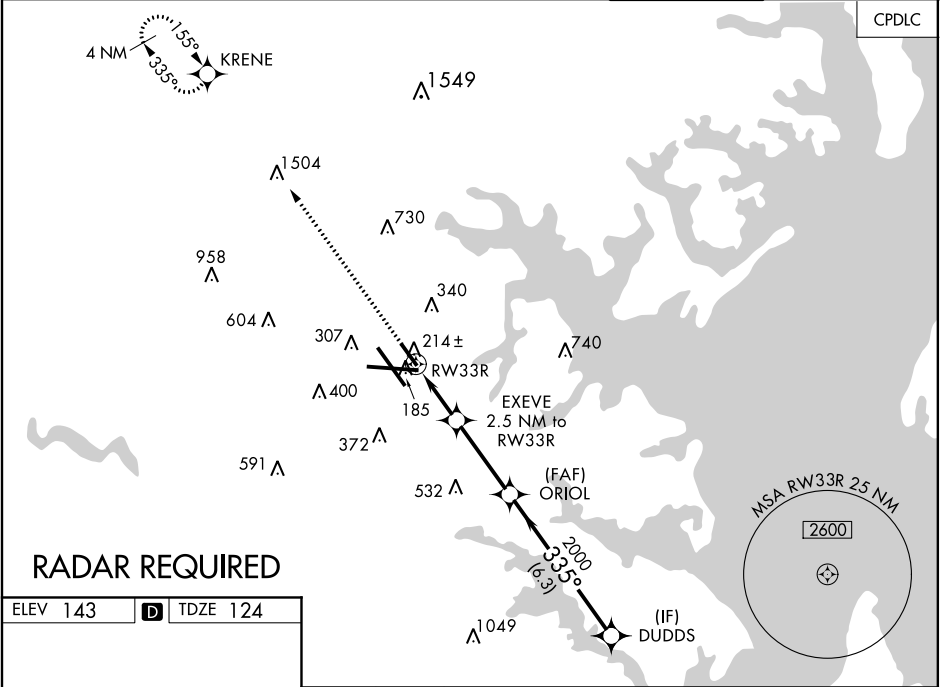
▼ For uncompensated Baro-VNAV systems, LNAV/VNAV NA below -13°C (-9°F) or above 54°C (130°F). DME/DME RNP-0.3 NA. For inoperative MALSR, increase LNAV/VNAV all Cats visibility to RVR 5000 and LNAV all Cats visibility to RVR 5500. Simultaneous approach authorized. Use of FD or AP providing RNAV track guidance required during simultaneous operations. LNAV procedure NA during simultaneous operations. Helicopter visibility reduction below RVR 4000 NA. Inoperative table does not apply to LPV, all Cats.

MALSR

MISSED APPROACH:

Climb to 3000 direct KRENE and hold.

D-ATIS	POTOMAC APP CON	BALTIMORE TOWER	GND CON	CLNC DEL
115.1 127.8	119.0 282.275 124.55 317.425 (020°-100°) (101°-130°)	119.7 290.475 128.7 307.9 (131°-180°) (181°-019°)	119.4 257.8	121.9 118.05



ELEV 143	D	TDZE 124
----------	----------	----------

