

RAVNN SIX ARRIVAL (RNAV) Transition Routes

BALTIMORE, MARYLAND

NE-3, 31 DEC 2020 to 28 JAN 2021

POTOMAC APP CON
1128.35 270.275
BWID-ATIS
1115.1 127.8

NOTE: RADAR required.

NOTE: RNAV 1.

NOTE: DME/DME/IRU or GPS required.

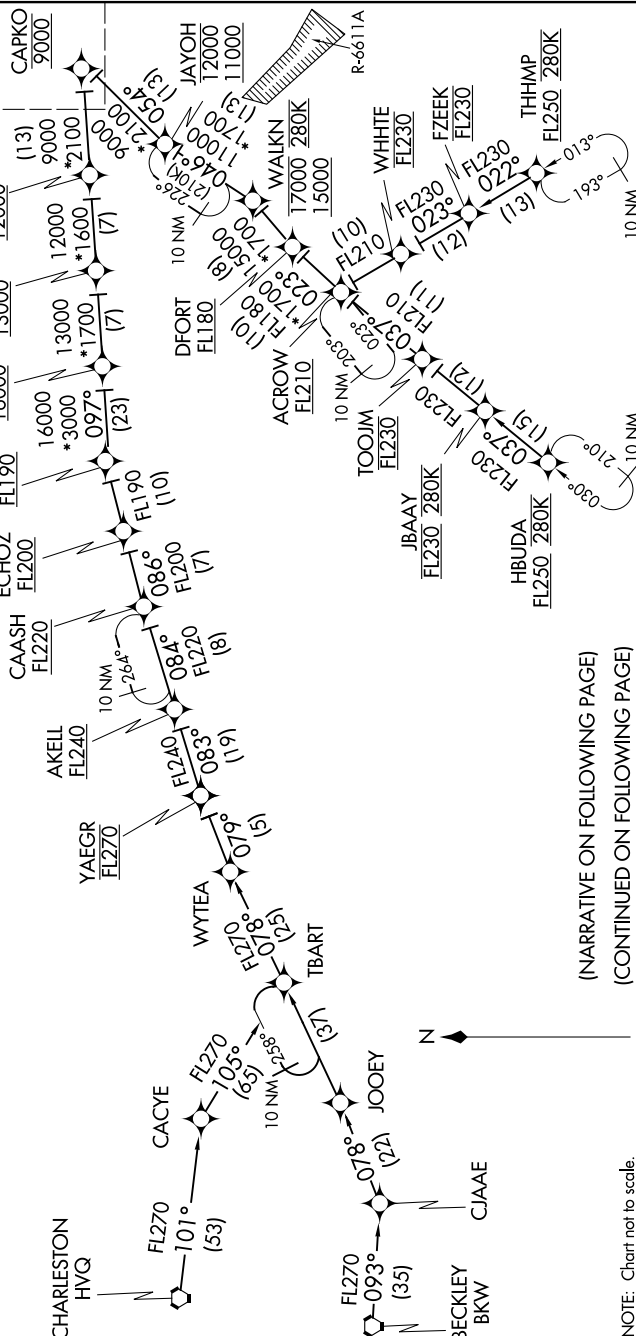
NOTE: Turbojet aircraft only.

NOTE: All part 91, 101, 103

133, 135, and 137 flight operations are prohibited on the HVQ/BKW/JOOEY transitions.

BECKLEY TRANSITION (BKW.RAVNN6)
CHARLESTON TRANSITION (HVQ.RAVNN6)
HBUDA TRANSITION (HBUDA.RAVNN6): (AT
JOOEY TRANSITION (JOOEY.RAVNN6): (AT
THHMP TRANSITION (THHMP.RAVNN6)

See following
page for
Arrival Routes.



(NARRATIVE ON FOLLOWING PAGE)

NOTE: Chart not to scale.

NE-3, 31 DEC 2020 to 28 JAN 2021

RAVNN SIX ARRIVAL (RNAV) Transition Routes (CAPKO.RAVNN6) 10DEC15

BALTIMORE, MARYLAND