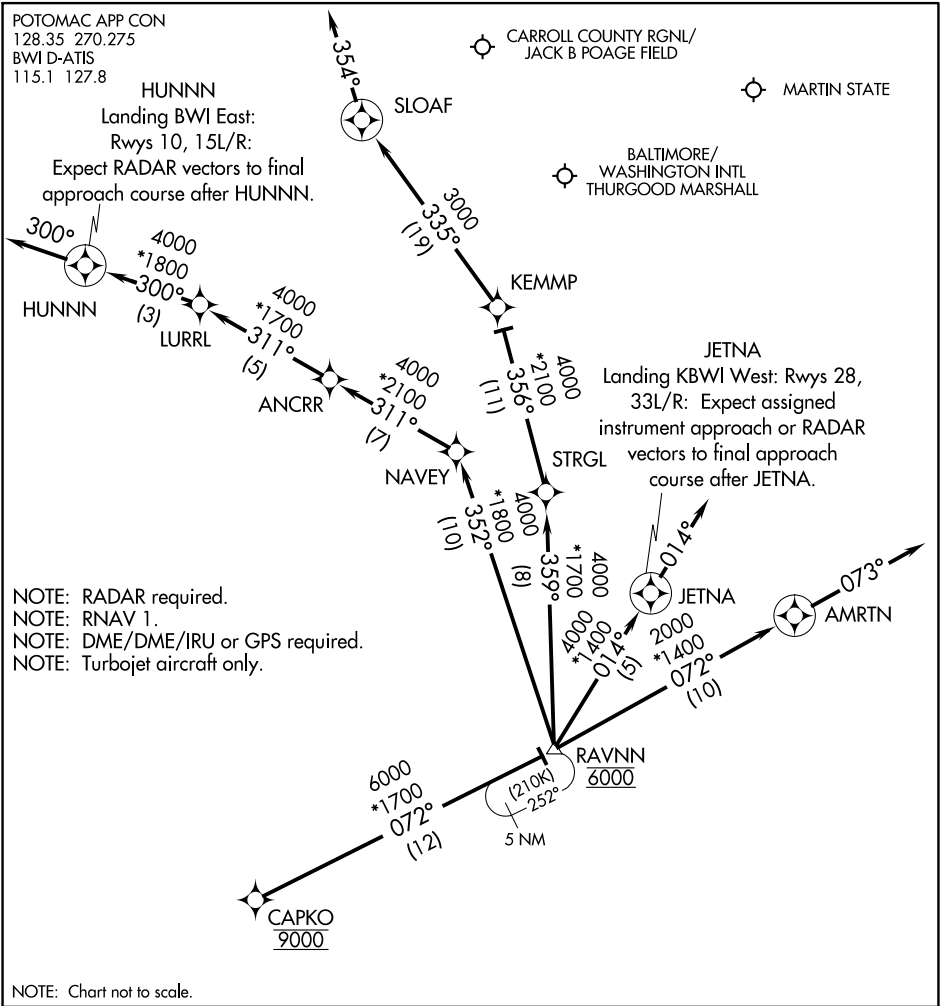


RAVNN SIX ARRIVAL (RNAV) Arrival Routes

BALTIMORE, MARYLAND



ARRIVAL ROUTE DESCRIPTION

From CAPKO on track 072° to cross RAVNN at 6000.

- LANDING BWI RUNWAYS 10, 15L/R: From RAVNN on track 352° to NAVEY, then on track 311° to ANCRR, then on track 311° to LURRL, then on track 300° to HUNNN, then on track 300°.
Expect RADAR vectors to final approach course.
- LANDING BWI RUNWAYS 28, 33L/R: From RAVNN on track 014° to JETNA, then on track 014°.
Expect assigned instrument approach or RADAR vectors to final approach course.
- LANDING DMW: From CAPKO on track 072° to cross RAVNN at 6000, then on track 359° to STRGL, then on track 356° to KEMMP, then on track 335° to SLOAF, then on heading 354°.
Expect RADAR vectors to final approach course.
- LANDING MTN: From CAPKO on track 072° to cross RAVNN at 6000, then on track 072° to AMRTN, then on track 073°. Expect RADAR vectors to final approach course.

RAVNN SIX ARRIVAL (RNAV) Arrival Routes

BALTIMORE, MARYLAND