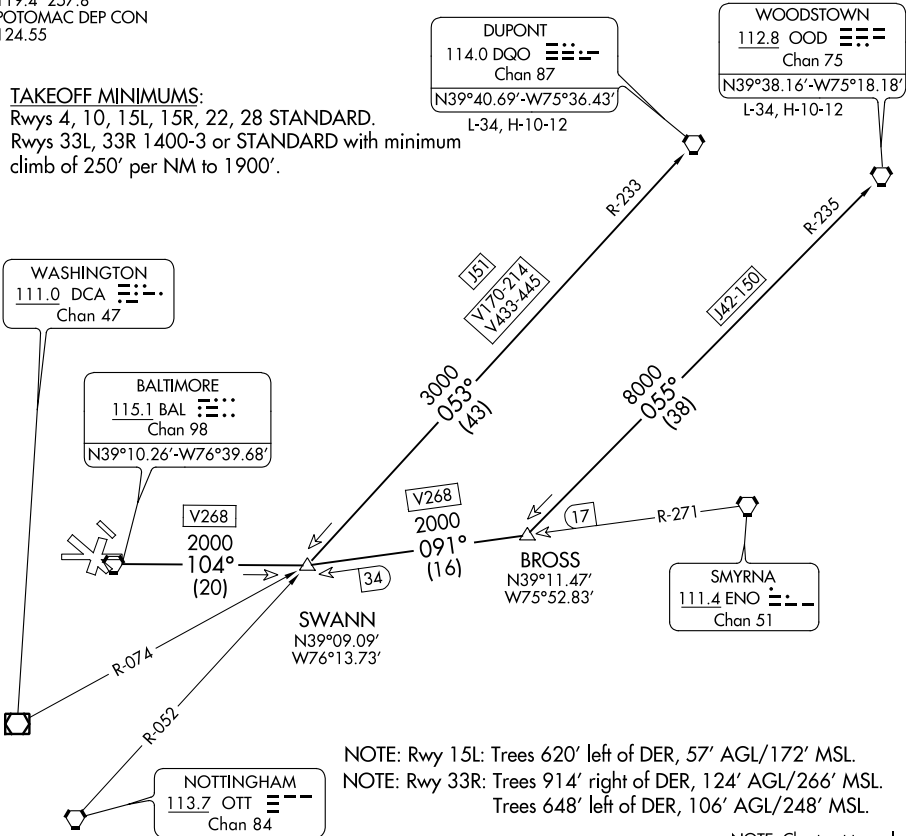


(SWANN3.SWANN) 20086  
SWANN THREE DEPARTURE

BALTIMORE/  
WASHINGTON INTL THURGOOD MARSHALL (BWI)  
AL-804 (FAA)  
BALTIMORE, MARYLAND

D-ATIS 115.1 127.8  
CLNC DEL 118.05  
CPDLC  
GND CON 121.9  
BALTIMORE TOWER  
119.4 257.8  
POTOMAC DEP CON  
124.55

**TAKEOFF MINIMUMS:**  
Rwys 4, 10, 15L, 15R, 22, 28 STANDARD.  
Rwys 33L, 33R 1400-3 or STANDARD with minimum  
climb of 250' per NM to 1900'.



NOTE: Rwy 15L: Trees 620' left of DER, 57' AGL/172' MSL.  
NOTE: Rwy 33R: Trees 914' right of DER, 124' AGL/266' MSL.  
Trees 648' left of DER, 106' AGL/248' MSL.

NOTE: Chart not to scale.



DEPARTURE ROUTE DESCRIPTION

**TAKEOFF RWY 28:**  
**JETS:** Fly runway heading until 3 DME, then turn left heading 150° Thence....  
**PROPS:** Fly runway heading. Thence....  
**TAKEOFF ALL OTHER RUNWAYS:** Fly runway heading. Thence....  
....For vectors to transition or assigned route, expect clearance to filed altitude ten minutes after departure.  
**DUPONT TRANSITION (SWANN3.DGO):** From over BAL VORTAC via BAL R-104 to SWANN INT, then via DGO VORTAC R-233 to DGO VORTAC.  
**WOODSTOWN TRANSITION (SWANN3.OOD):** From over BAL VORTAC via BAL R-104 to SWANN INT, then via ENO VORTAC R-271 to BROSS INT, then via OOD VORTAC R-235 to OOD VORTAC.