

VIRGINIA BEACH, VIRGINIA

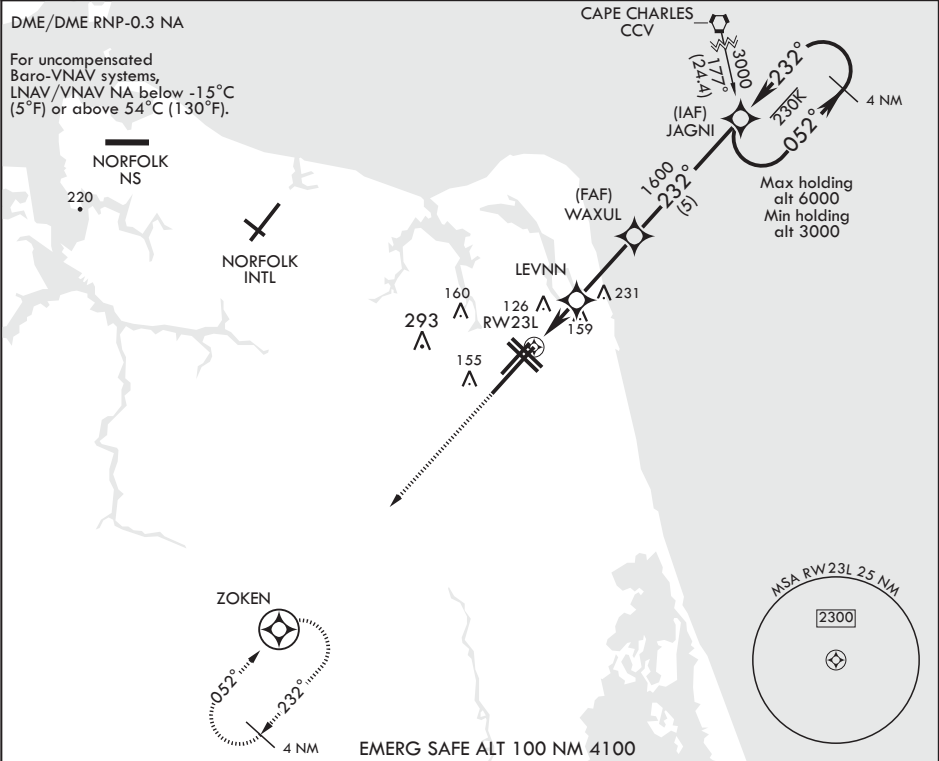
RNAV (GPS) RWY 23L


WAAS CH 67300 W23A	APCH CRS 232°	Rwy ldg TDZE Arpt Elev	12,008 21 22
--------------------------	------------------	------------------------------	--------------------

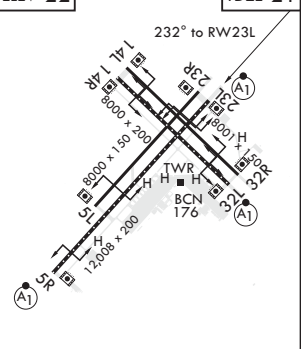
AL-934 (USN) OCEANA NAS (APOLLO SOUCEK FLD) (KNTU)

▼ * When ALS inop, increase CAT AB vis to 1 mile, CAT CD vis to 1 1/4 miles.	ALSF-1 	MISSED APPROACH: Climb to 3000 direct ZOKEN and hold. Continue climb in hold to 3000.
--	---	---

ATIS 317.6	OCEANA APP CON 123.9 266.8	TOWER 127.075 360.2	GND CON 119.6 336.4	CLNC DEL 254.4	ASR/PAR
---------------	-------------------------------	------------------------	------------------------	-------------------	---------



3000	ZOKEN	Glidepath not coincident with PAR.	JAGNI	052°	3000	ELEV 22	TDZE 21
↑			WAXUL	232°	1600		
† LNAV only			LEVNN		700 †		
RW23L		† 1.2 NM to RW23L					
		2 NM			2.7 NM		
CATEGORY	A	B	C	D			
LPV DA*	221-1/2	200	(200-1/2)				
LNAV/VNAV DA*	442-7/8	421	(500-7/8)				
LNAV MDA*	460-1/2	439 (500-1/2)	460-3/4 439 (500-3/4)				
Ⓢ CIRCLING	500-1	478 (500-1)	640-1 3/4 618 (700-1 3/4)	640-2 618 (700-2)			



HIRL all Rwys
Wave-Off Lights all Rwys

VIRGINIA BEACH, VIRGINIA

36°49'N - 76°02'W OCEANA NAS (APOLLO SOUCEK FLD) (KNTU)

Amtdt 3 03JAN19

RNAV (GPS) RWY 23L

NE-3, 31 DEC 2020 to 28 JAN 2021

NE-3, 31 DEC 2020 to 28 JAN 2021