

VIRGINIA BEACH, VIRGINIA

WAAS CH <b>69870</b> <b>W05B</b>	APCH CRS <b>052°</b>	Rwy ldg TDZE Arprt Elev	<b>12,008</b> <b>19</b> <b>22</b>
--	-------------------------	-------------------------------	---

AL-934 (USN) OCEANA NAS (APOLLO SOUCEK FLD) (KNTU)

**▼** \* When ALS inop, increase CAT AB vis to 1 mile, CAT CD vis to 1 3/8 miles.

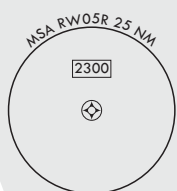
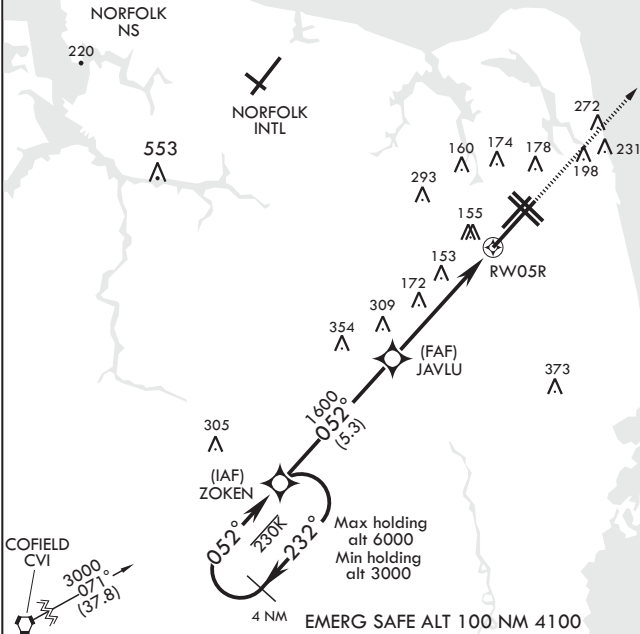


MISSED APPROACH: Climb to 3000 direct JAGNI and hold. Continue climb in hold to 3000.

ATIS <b>317.6</b>	OCEANA APP CON <b>123.9 266.8</b>	TOWER <b>127.075 360.2</b>	GND CON <b>119.6 336.4</b>	CLNC DEL <b>254.4</b>	ASR/PAR
----------------------	--------------------------------------	-------------------------------	-------------------------------	--------------------------	---------

DME/DME RNP-0.3 NA

For uncompensated Baro-VNAV systems, LNAV/VNAV NA below -15°C (5°F) or above 54°C (130°F).



3000 ← 232°

052° →

ZOKEN

1600

JAVLU

1.2 NM to RW05R

4.7 NM

RW05R

GP 3.04°

TCH 55

Glidepath not coincident with PAR.

3000

JAGNI

ELEV 22

TDZE 19

† LNAV only

† 1.2 NM to RW05R

CATEGORY	A	B	C	D
LPV DA*	219-1/2	200	(200-1/2)	
LNAV/VNAV DA*	341-3/8	322	(400-3/8)	
LNAV MDA*	460-1/2 441 (500-1/2)	460-3/8 441 (500-3/8)	640-1 3/4 618 (700-1 3/4)	640-2 618 (700-2)
CIRCLING	500-1 478 (500-1)			

052° to RW05R

HIRL all Rwy

Wave-Off Lights all Rwy

VIRGINIA BEACH, VIRGINIA

36°49'N - 76°02'W OCEANA NAS (APOLLO SOUCEK FLD) (KNTU)

Amdt 3 03JAN19

RNAV (GPS) RWY 5R

NE-3, 31 DEC 2020 to 28 JAN 2021

NE-3, 31 DEC 2020 to 28 JAN 2021