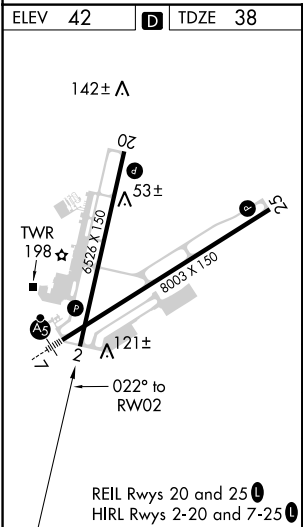
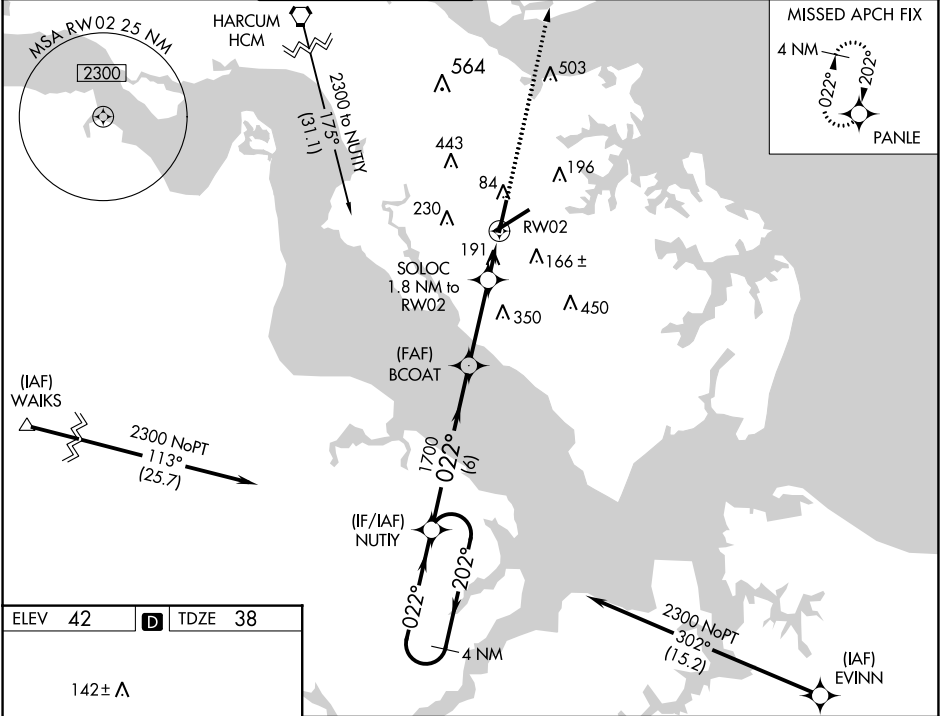


WAAS CH 61020 W02A	APP CRS 022°	Rwy Idg TDZE Apt Elev	6526 38 42
--	------------------------	-----------------------------	---------------------------------------

RNAV (GPS) RWY 2
NEWPORT NEWS/WILLIAMSBURG INTL (PHF')

RNP APCH.		MISSED APPROACH: Climb to 2000 direct PANLE and hold.	
ATIS 128.65	NORFOLK APP CON 125.7 335.625	NEWPORT NEWS TOWER★ 118.7(CTAF) 257.9	GND CON 121.9 348.6
		CLNC DEL 121.65 225.4	UNICOM 122.95



4 NM

Holding Pattern

2000

↑

PANLE

✧

VGSI and RNAV glidepath not coincident (VGSI Angle 3.00°/TCH 53).

NUTUY

BCOAT

SOLOC

1.8 NM to RW02

*LNNAV only

2300 ← 022°

022° →

022°

1700

1700

*660

*1.1 NM to RW02

RW02

GP 3.00°

TCH 60

6 NM

3.2 NM

0.7

1.1 NM

CATEGORY	A	B	C	D
LPV DA	241-1 203 (200-1)			
LNNAV/ VNAV DA	476-1½ 438 (500-1½)			
LNNAV MDA	460-1 422 (500-1)		460-1¼ 422 (500-1¼)	
CIRCLING	520-1 478 (500-1)	540-1 498 (500-1)	760-2 718 (800-2)	780-2¼ 738 (800-2¼)

NE-3, 31 DEC 2020 to 28 JAN 2021

NE-3, 31 DEC 2020 to 28 JAN 2021