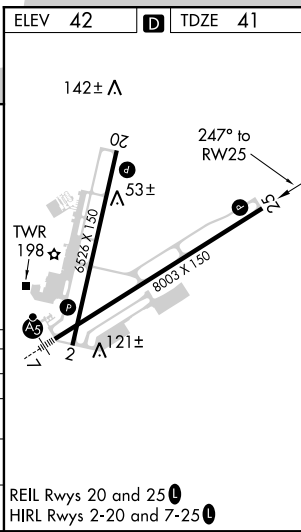
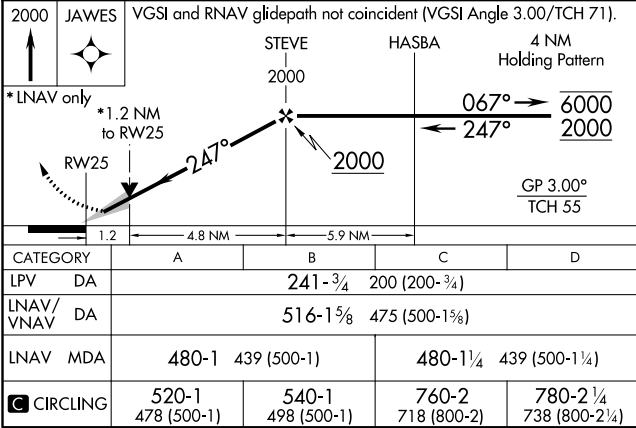
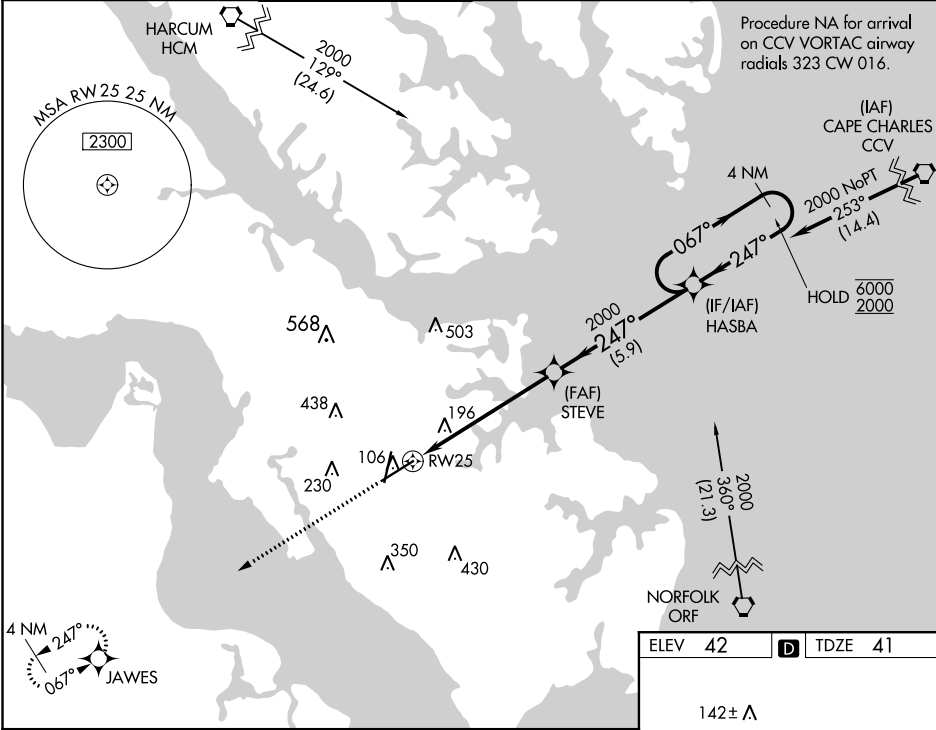


WAAS CH 45510 W25A	APP CRS 247°	Rwy Idg 8003 TDZE 41 Apt Elev 42
--	------------------------	---

RNAV (GPS) RWY 25

NEWPORT NEWS/WILLIAMSBURG INTL (PHF')

RNP APCH.		MISSED APPROACH: Climb to 2000 direct JAWES and hold.			
▼ For uncompensated Baro-VNAV systems, LNAV/VNAV NA below -11° C or above 54° C.					
ATIS 128.65	NORFOLK APP CON 125.7	NEWPORT NEWS TOWER★ 118.7(CTAF) 257.9	GND CON 121.9 348.6	CLNC DEL 121.65 225.4	UNICOM 122.95



NE-3, 31 DEC 2020 to 28 JAN 2021

NE-3, 31 DEC 2020 to 28 JAN 2021