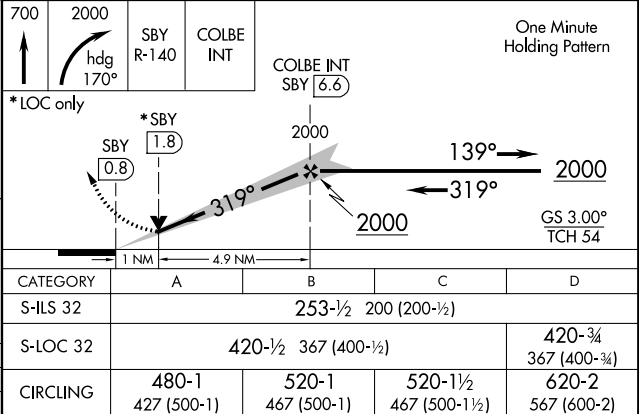
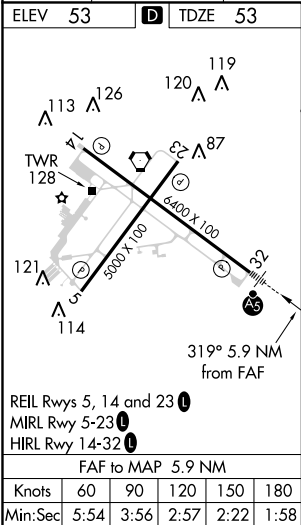
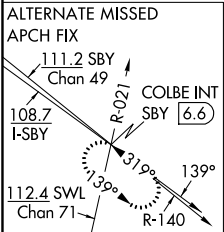
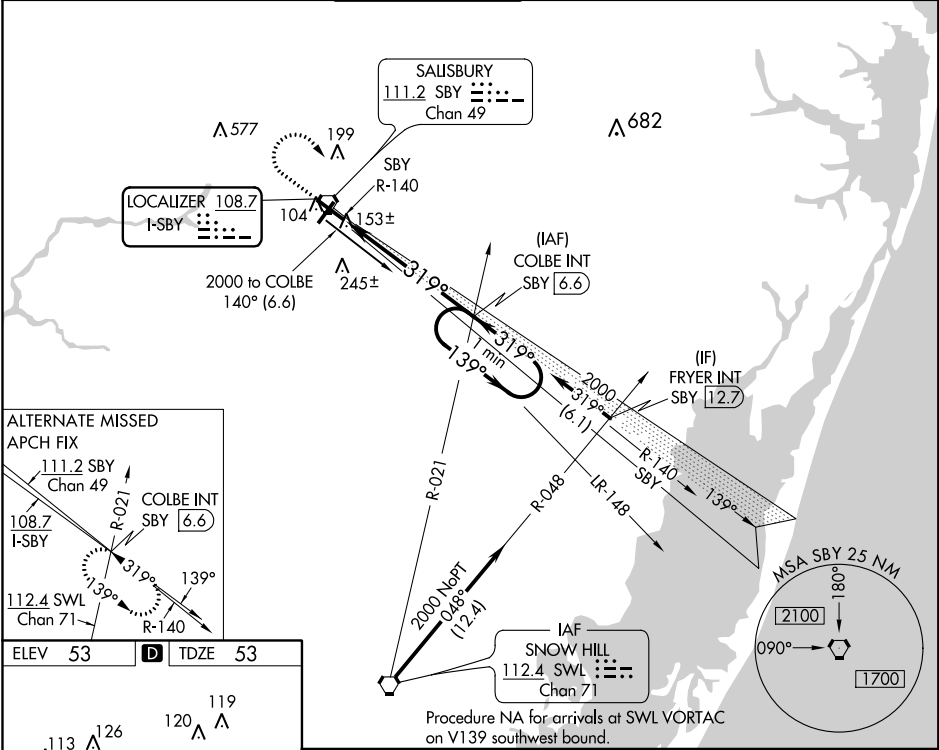


LOC I-SBY <b>108.7</b>	APP CRS <b>319°</b>	Rwy Idg TDZE Apt Elev	<b>6400</b> <b>53</b> <b>53</b>
---------------------------	------------------------	-----------------------------	---------------------------------------

ILS or LOC RWY 32  
SALISBURY-OCEAN CITY WICOMICO RGNL (SBY)

⚠ When local altimeter setting not received, use Georgetown altimeter setting and increase DA 52 feet and all MDA 60 feet, and increase S-LOC 32 Cat C visibility ¼ mile.	MALSR A5	MISSED APPROACH: Climb to 700 then climbing right turn to 2000 on heading 170° and on SBY VORTAC R-140 to COLBE INT/SBY VORTAC 6.6 DME and hold.
---	-------------	--

ASOS <b>118.325</b>	PATUXENT APP CON ★ <b>127.95 314.0</b>	SALISBURY TOWER ★ <b>119.425</b> (CTAF) 0	GND CON <b>123.775</b>	CLNL DEL ★ <b>123.775</b>	UNICOM <b>122.95</b>
------------------------	---	--	---------------------------	------------------------------	-------------------------



NE-3, 31 DEC 2020 to 28 JAN 2021

NE-3, 31 DEC 2020 to 28 JAN 2021