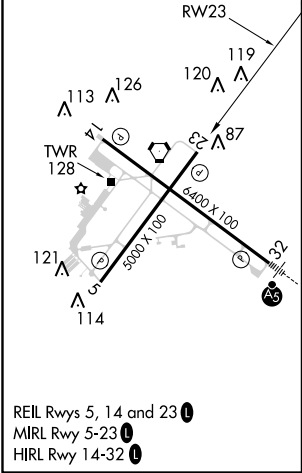
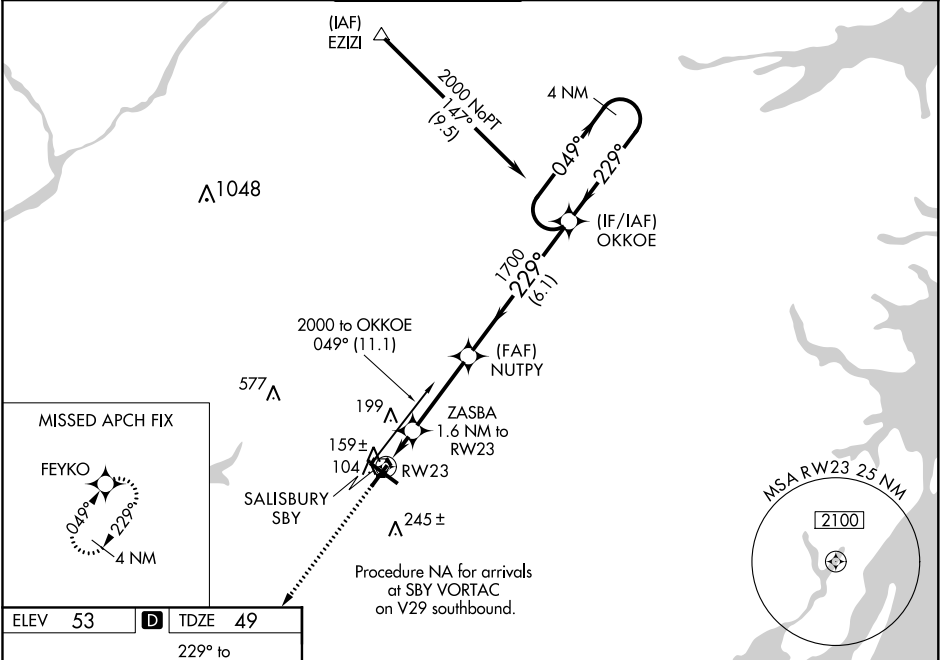


WAAS CH 78018 W23A	APP CRS 229°	Rwy Idg 5000 TDZE 49 Apt Elev 53
--	------------------------	---

RNAV (GPS) RWY 23

SALISBURY-OCEAN CITY WICOMICO RGNL (SBY)

RNP APCH. Baro-VNAV NA when using Georgetown altimeter setting. For uncompensated Baro-VNAV systems, LNAV/VNAV NA below -15°C or above 43°C. Rwy 23 helicopter visibility reduction below $\frac{3}{4}$ SM NA. When local altimeter setting not received use Georgetown altimeter setting and increase all DA 52 feet and all MDA 60 feet; increase LPV all Cats and LNAV Cats C/D visibility $\frac{1}{4}$ mile.			MISSED APPROACH: Climb to 2000 direct FEYKO and hold.		
ASOS 118.325	PATUXENT APP CON ★ 127.95 314.0	SALISBURY TOWER ★ 119.425 (CTAF) 0	GND CON 123.775	CLNL DEL ★ 123.775	UNICOM 122.95



2000 FEYKO		VGSI and RNAV glidepath not coincident (VGSI Angle 3.00/TCH 45).		4 NM Holding Pattern	
*LNAV only.		ZASBA 1.6 NM to RW23		NUTPY 1700	
RW23		*600		1700	
1.6		3.4 NM		6.1 NM	
CATEGORY	A	B	C	D	
LPV DA	374-1		325 (400-1)		
LNAV/VNAV DA	451-1½		402 (400-1½)		
LNAV MDA	420-1		371 (400-1)		420-1¼ 371 (400-1¼)
CIRCLING	480-1 427 (500-1)	520-1 467 (500-1)	520-1½ 467 (500-1½)	620-2 567 (600-2)	