

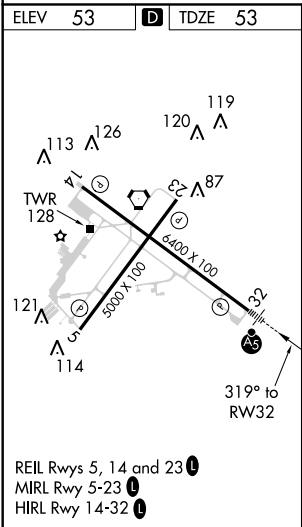
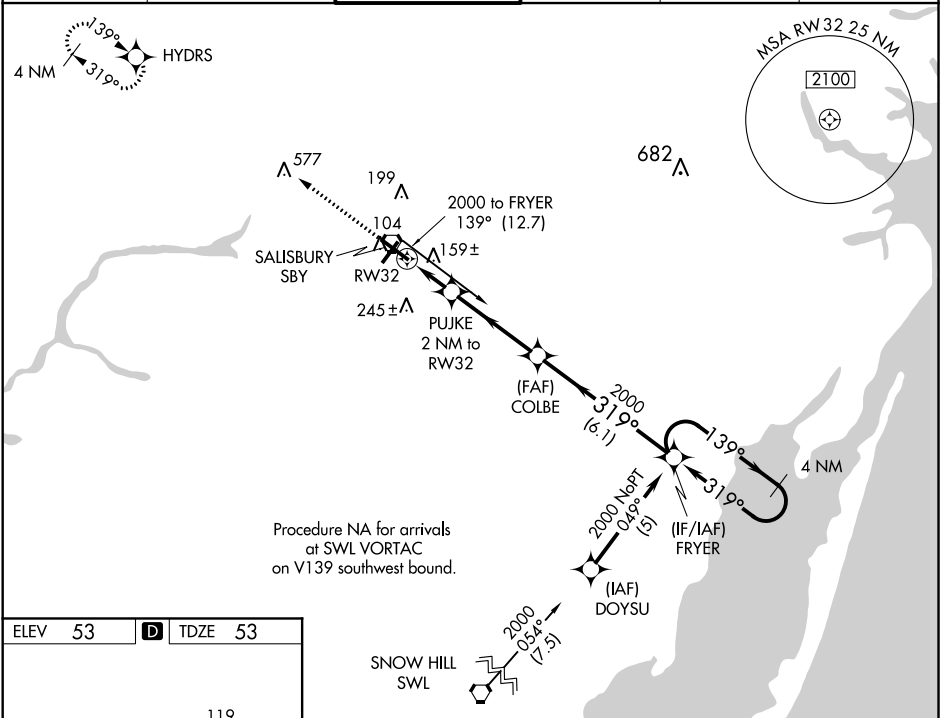
WAAS CH 48912 W32A	APP CRS 319°	Rwy Idg 6400 TDZE 53 Apt Elev 53
--	------------------------	---

RNAV (GPS) RWY 32

SALISBURY-OCEAN CITY WICOMICO RGNL (SBY)

<p>⚠ For uncompensated Baro-VNAV systems, LNAV/VNAV NA below -15°C (5°F) or above 49°C (120°F). DME/DME RNP-0.3 NA. When local altimeter setting not received, use Georgetown altimeter setting and increase all DA 52 feet and all MDA 60 feet, increase LNAV Cat C visibility ¼ mile. For inoperative MALSR, increase LNAV Cat D visibility to 1¼. VDP and Baro-VNAV NA when using Georgetown altimeter setting.</p>	<p>MALSR</p> <p>A5</p> <p></p>	<p>MISSED APPROACH: Climb to 2100 direct HYDRS and hold.</p>
---	---------------------------------------	--

ASOS 118.325	PATUXENT APP CON ★ 127.95 314.0	SALISBURY TOWER ★ 119.425 (CTAF) 0	GND CON 123.775	CLNL DEL ★ 123.775	UNICOM 122.95
------------------------	---	---	---------------------------	------------------------------	-------------------------



2100	HYDRS	*LNAV only	COLBE	FRYER	4 NM Holding Pattern
			PUJKE 2 NM to RW32		
			*1 NM to RW32		
			*740		
			1 NM	1 NM	3.9 NM
			6.1 NM		
CATEGORY	A	B	C	D	
LPV DA		253-½	200 (200-½)		
LNAV/ VNAV DA		458-1	405 (500-1)		
LNAV MDA		420-½	367 (400-½)		420-1 367 (400-1)
CIRCLING	480-1 427 (500-1)	520-1 467 (500-1)	520-1½ 467 (500-1½)		620-2 567 (600-2)

NE-3, 31 DEC 2020 to 28 JAN 2021

NE-3, 31 DEC 2020 to 28 JAN 2021