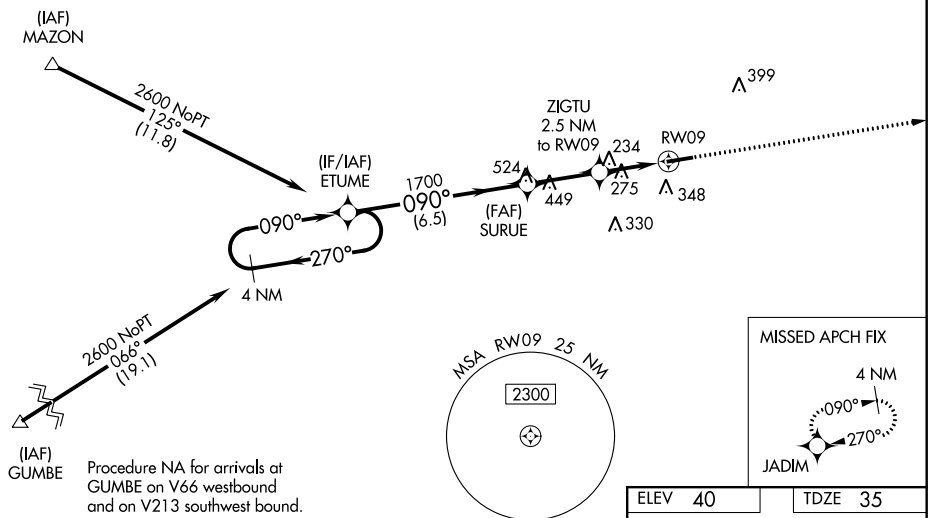


RNAV (GPS) RWY 9
FRANKLIN RGNL (FKN)

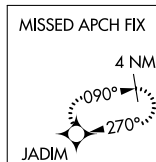
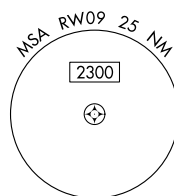
MISSED APPROACH:
Climb to 2600 direct
JADIM and hold.

UNICOM
122.8 (CTAF) **L**

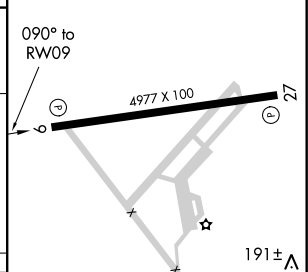
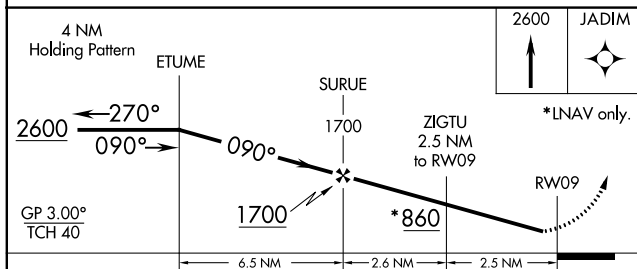
1096A



Procedure NA for arrivals at GUMBE on V66 westbound and on V213 southwest bound.



ELEV 40	TDZE 35
---------	---------



CATEGORY	A	B	C	D
LPV DA	320-1 285 (300-1)			
LNAV/VNAV DA	319-1 284 (300-1)			
LNAV MDA	580-1	545 (600-1)	580-1 $\frac{5}{8}$	545 (600-1 $\frac{5}{8}$)

MIRL Rwy 9-27 **L**