

DUBLIN, VIRGINIA

AL-5084 (FAA)

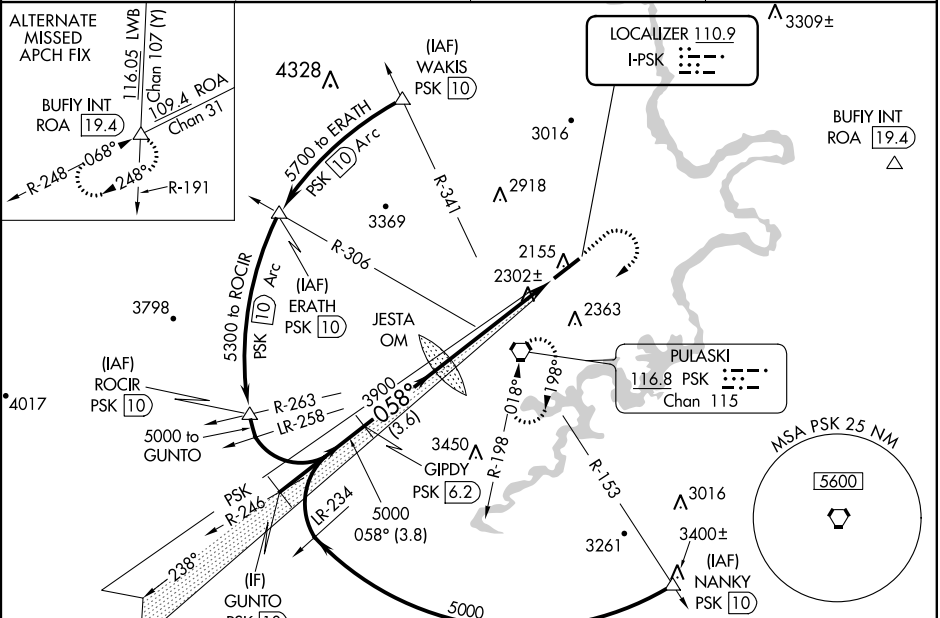
20086

LOC I-PSK 110.9	APP CRS 058°	Rwy Idg TDZE Apt Elev 6201 2105 2105
---------------------------	------------------------	--

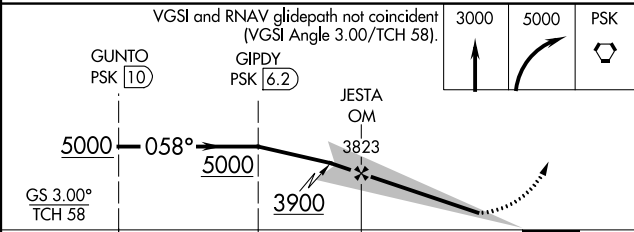
ILS or LOC Y RWY 6
NEW RIVER VALLEY (PSK)

DME required.	MALSR 	MISSED APPROACH: Climb to 3000 then climbing right turn to 5000 direct PSK VORTAC and hold.
NA		

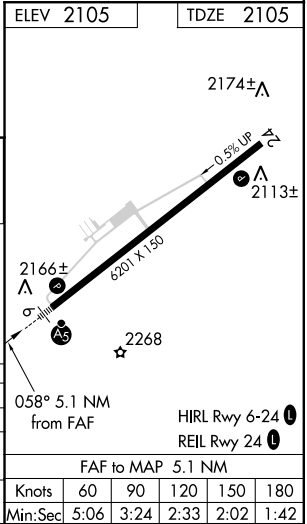
AWOS-3 127.375	ROANOKE APP CON 126.0 339.8	ROANOKE CLNC DEL 121.7	UNICOM 122.7 (CTAF)
--------------------------	---------------------------------------	----------------------------------	-------------------------------



DME REQUIRED



CATEGORY	A	B	C	D
S-ILS 6		2305-1	200 (200-1)	
S-LOC 6		2560-1	455 (500-1)	
CIRCLING	2620-1	515 (600-1)	2620-1½ 515 (600-1½)	2680-2 575 (600-2)



DUBLIN, VIRGINIA
Orig-A 20JUN19

37°08'N-80°41'W

NEW RIVER VALLEY (PSK)
ILS or LOC Y RWY 6

NE-3, 31 DEC 2020 to 28 JAN 2021

NE-3, 31 DEC 2020 to 28 JAN 2021