


LOC I-PSK	APP CRS	Rwy Idg	6201
110.9	058°	TDZE	2105
		Apt Elev	2105

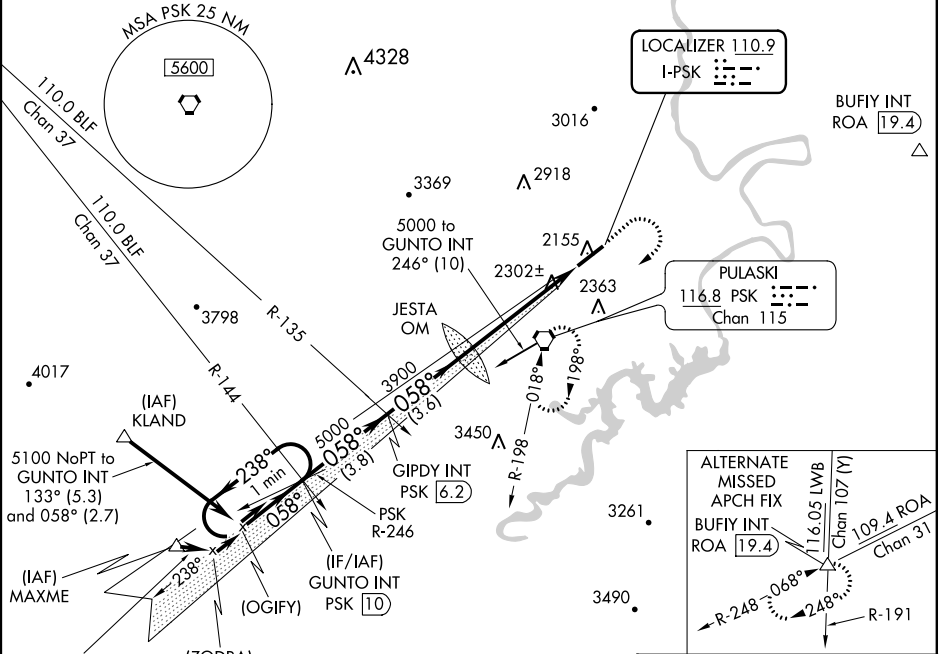
ILS or LOC Z RWY 6  
NEW RIVER VALLEY (PSK)

**NA** When local altimeter setting not received, use Blacksburg altimeter setting and increase all DA 36 feet, and all MDA 40 feet. Inop table does not apply to S-ILS 6 all Cats and S-LOC 6 Cats A and B. For inop MALSR, increase S-LOC 6 Cat C visibility to 1 1/4 SM.

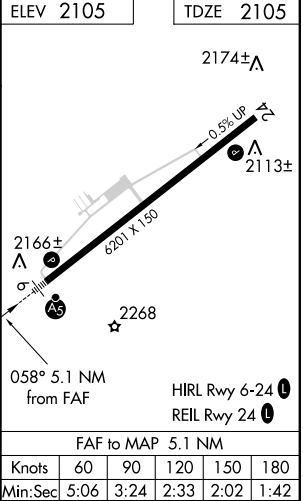
**MALSR** 

**MISSED APPROACH:** Climb to 3000 then climbing right turn to 5000 direct PSK VORTAC and hold.

AWOS-3 127.375	ROANOKE APP CON 126.0 339.8	ROANOKE CLNC DEL 121.7	UNICOM 122.7 (CTAF) 
-------------------	--------------------------------	---------------------------	--



VGSI and RNAV glidepath not coincident (VGSI Angle 3.00/TCH 58).				
One Minute Holding Pattern				
GUNTO INT PSK 10    GIPDY INT PSK 6.2    JESTA OM    3823    3900				
5000 ← 238°    058° → 5000				
GS 3.00° TCH 58				
3.8 NM    3.6 NM    5.1 NM				
CATEGORY	A	B	C	D
S-ILS 6		2305-1	200 (200-1)	
S-LOC 6		2560-1	455 (500-1)	
CIRCLING	2620-1	515 (600-1)	2620-1 1/2 515 (600-1 1/2)	2680-2 575 (600-2)



NE-3, 31 DEC 2020 to 28 JAN 2021

NE-3, 31 DEC 2020 to 28 JAN 2021