
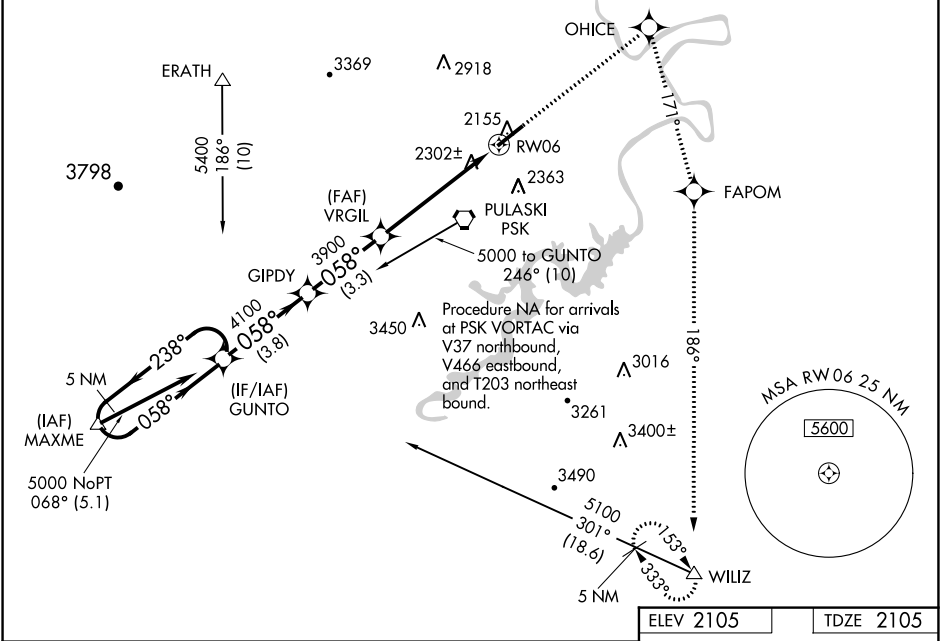


WAAS CH 87015 W06A	APP CRS 058°	Rwy Idg TDZE 2105 Apt Elev 2105
--	------------------------	---

RNAV (GPS) RWY 6
NEW RIVER VALLEY (PSK)

RNP APCH.			<div>MALSR</div> <div></div>	MISSED APPROACH: Climb to 6000 direct OHICE and right turn via track 171° to FAPOM and via track 186° to WILIZ and hold.
⚠ For uncompensated Baro-VNAV systems, LNAV/VNAV NA below -19°C or above 44°C. When local altimeter setting not received, use Blacksburg altimeter setting and increase all DA 36 feet, and all MDA 40 feet. VDP and Baro-VNAV NA when using Blacksburg altimeter setting. Inop table does not apply to LPV all Cats and LNAV Cats A and B. For inop MALSR, increase LNAV Cat C visibility to 1 1/4 SM.				
AWOS-3 127.375	ROANOKE APP CON 126.0 339.8	ROANOKE CLNC DEL 121.7	UNICOM 122.7 (CTAF) 0	



5 NM Holding Pattern		6000	OHICE	FAPOM	tr 171°	WILIZ
GUNTO		VGSI and RNAV glidepath not coincident (VGSI Angle 3.00/TCH 58).				
5000		238°	058°	058°	* LNAV only.	
GP 3.00° TCH 58		4100	3900	3900	* 1.3 NM to RW06	RW06
3.8 NM		3.3 NM	4.1 NM	1.3 NM	2174±	
CATEGORY	A	B	C	D	2113±	
LPV DA	2305-1		200 (200-1)		2166±	
LNAV/ VNAV DA	2597-1 1/4		492 (500-1 1/4)		6201 x 150	
LNAV MDA	2560-1		455 (500-1)		2268	
CIRCLING	2620-1	515 (600-1)	2620-1 1/2	575 (600-2)	058° to RW06	
					HIRL Rwy 6-24	
					REIL Rwy 24	

NE-3, 31 DEC 2020 to 28 JAN 2021

NE-3, 31 DEC 2020 to 28 JAN 2021